

Product datasheet for **AP31783PU-N**

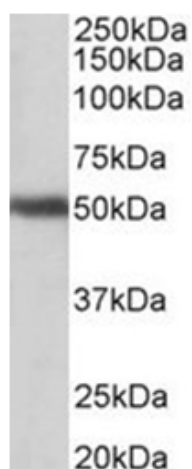
GPR83 (17-30) Goat Polyclonal Antibody

Product data:

Product Type:	Primary Antibodies
Applications:	ELISA, WB
Recommended Dilution:	Peptide ELISA: Detection Limit: 1/2000. Western Blot: 1-3 µg/ml. Approx 50kDa band observed in Human Brain (Cerebellum, Cerebral Cortex and Amygdala) lysates (calculated MW of 48.3kDa according to NP_057624.3).
Reactivity:	Human
Host:	Goat
Clonality:	Polyclonal
Immunogen:	Peptide with sequence from the N Terminus of the protein sequence according to NP_057624.3.
Specificity:	Recognizes GPR83 (17-30).
Formulation:	Tris saline, pH~7.3 containing 0.02% Sodium Azide as preservative and 0.5% BSA as stabilizer State: Aff - Purified State: Liquid purified Ig fraction
Concentration:	lot specific
Purification:	Ammonium Sulphate Precipitation followed by Antigen Affinity Chromatography using the immunizing peptide
Conjugation:	Unconjugated
Storage:	Store the antibody undiluted at 2-8°C for one month or (in aliquots) at -20°C for longer. Avoid repeated freezing and thawing.
Stability:	Shelf life: one year from despatch.
Gene Name:	G protein-coupled receptor 83
Database Link:	Entrez Gene 10888 Human Q9NYM4
Synonyms:	G-protein coupled receptor 83, KIAA1540



[View online »](#)

Product images:

GPR83 antibody staining of Human Cerebellum lysate at 1 ug/ml (35 ug protein in RIPA buffer). Primary incubation was 1 hour. Detected by chemiluminescence.