

Product datasheet for **AP31773PU-N**

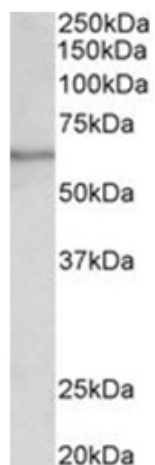
SLC47A2 Goat Polyclonal Antibody

Product data:

Product Type:	Primary Antibodies
Applications:	ELISA, WB
Recommended Dilution:	Peptide ELISA: Detection Limit: 1/32000. Western Blot: 0.1-0.3 µg/ml. Approx 60kDa band observed in Human Testis lysates (calculated MW of 61.0kDa according to NP_001093116.1).
Reactivity:	Human
Host:	Goat
Clonality:	Polyclonal
Immunogen:	Peptide with sequence from the internal region (near C terminus) of the protein sequence according to NP_690872.2; NP_001093116.1.
Specificity:	This antibody is expected to recognize both reported isoforms (NP_690872.2; NP_001093116.1).
Formulation:	Tris saline, pH~7.3 containing 0.02% Sodium Azide as preservative and 0.5% BSA as stabilizer State: Aff - Purified State: Liquid purified Ig fraction
Concentration:	lot specific
Purification:	Ammonium Sulphate Precipitation followed by Antigen Affinity Chromatography using the immunizing peptide
Conjugation:	Unconjugated
Storage:	Store the antibody undiluted at 2-8°C for one month or (in aliquots) at -20°C for longer. Avoid repeated freezing and thawing.
Stability:	Shelf life: one year from despatch.
Gene Name:	solute carrier family 47 member 2
Database Link:	Entrez Gene 146802 Human Q86VL8
Synonyms:	FLJ31196; hMATE-2; MATE-2; MATE2; MATE2-B; MATE2-K; MATE2K
Protein Families:	Transmembrane



[View online »](#)

Product images:

SLC47A2 antibody staining of Human testis lysate at 0.1 ug/ml (35 ug protein in RIPA buffer). Primary incubation was 1 hour. Detected by chemiluminescence.