

Product datasheet for **AP31766PU-N**

HES1 (N-term) Rabbit Polyclonal Antibody

Product data:

Product Type:	Primary Antibodies
Applications:	ELISA, IHC, WB
Recommended Dilution:	ELISA: 1/80000. Immunohistochemistry on Paraffin Sections: 2.5 µg/ml. Western Blot: 1/200 - 1/1000.
Reactivity:	Human, Mouse, Rat
Host:	Rabbit
Isotype:	IgG
Clonality:	Polyclonal
Immunogen:	Synthetic peptide. Epitope: N-Terminus
Formulation:	PBS (without Mg ²⁺ , Ca ²⁺), pH 7.4, 150 mM Sodium Chloride, 0.02% Sodium Azide and 50% Glycerol State: Aff - Purified State: Liquid purified Ig fraction
Concentration:	lot specific
Purification:	Affinity Chromatography
Conjugation:	Unconjugated
Storage:	Store the antibody undiluted at 2-8°C for one month or (in aliquots) at -20°C for longer. Avoid repeated freezing and thawing.
Stability:	Shelf life: one year from despatch.
Gene Name:	hes family bHLH transcription factor 1
Database Link:	Entrez Gene 15205 Mouse Entrez Gene 29577 Rat Entrez Gene 3280 Human Q14469



[View online »](#)

Background:

HES1 is a nuclear protein belonging to the basic helix-loop-helix family of transcription factors with a basic helix-loop-helix (bHLH) domain and an Orange domain. The basic domain of HES1 contains a helix interrupting protein that binds to the N-box rather than the canonical E-box. An immediate early response gene to growth factor, HES1 is reported as having a dual function of both transcriptional activator and silencer of acid alpha-glucosidase (GAA), thus contributing to the subtle tissue-specific control of housekeeping genes such as GAA. HES1 is a transcriptional repressor of genes which require a bHLH protein for their transcription and also the formation of a complex with a corepressor protein (Groucho) such as TLE2. HES1 may act as a negative regulator of myogenesis by inhibiting the functions of MYOD1 and ASH1.

Synonyms:

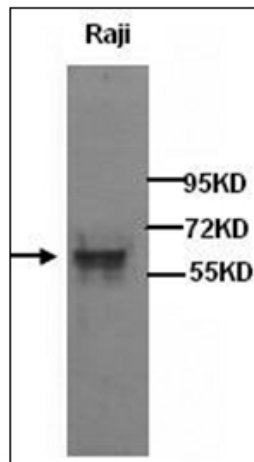
HES-1, HL, HRY, Hairy-like, HHL, Hairy homolog

Protein Families:

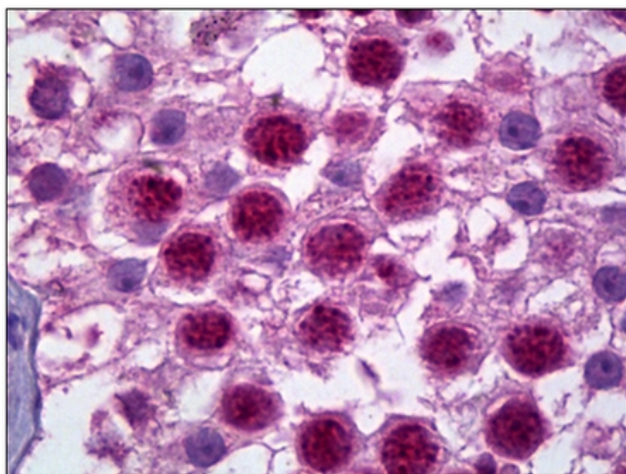
Adult stem cells, Cancer stem cells, Druggable Genome, ES Cell Differentiation/IPS, Stem cell relevant signaling - DSL/Notch pathway, Transcription Factors

Protein Pathways:

Maturity onset diabetes of the young, Notch signaling pathway

Product images:

Western Blot analysis of Raji cell lysates with anti-HSE1 antibody at 1/500 dilution



Human Testis: Formalin-Fixed, Paraffin-Embedded (FFPE)