

Product datasheet for **AP31762PU-N**

Neurofibromin (NF1) Rabbit Polyclonal Antibody

Product data:

Product Type:	Primary Antibodies
Applications:	ELISA, IF, IHC, WB
Recommended Dilution:	ELISA: 1/20000. Immunofluorescence: 1/100 - 1/500. Immunohistochemistry on Paraffin Sections. Western Blot: 1/500 - 1/1000.
Reactivity:	Human, Mouse, Rat
Host:	Rabbit
Isotype:	IgG
Clonality:	Polyclonal
Immunogen:	Synthetic peptide from Human NF1. Epitope: Internal.
Specificity:	This antibody detects endogenous levels of total NF1 protein.
Formulation:	PBS (without Mg ²⁺ , Ca ²⁺), pH 7.4, 150 mM Sodium Chloride, 0.02% Sodium Azide and 50% Glycerol State: Aff - Purified State: Liquid purified Ig fraction
Concentration:	lot specific
Purification:	Immunoaffinity Chromatography
Conjugation:	Unconjugated
Storage:	Store the antibody undiluted at 2-8°C for one month or (in aliquots) at -20°C for longer. Avoid repeated freezing and thawing.
Stability:	Shelf life: one year from despatch.
Gene Name:	neurofibromin 1
Database Link:	Entrez Gene 18015 Mouse Entrez Gene 24592 Rat Entrez Gene 4763 Human P21359



[View online »](#)

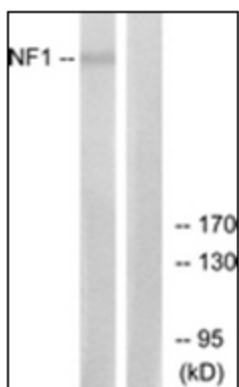
Background: Mutations linked to neurofibromatosis type 1 led to the identification of NF1. NF1 encodes the protein neurofibromin, which appears to be a negative regulator of the ras signal transduction pathway. In addition to type 1 neurofibromatosis, mutations in NF1 can also lead to juvenile myelomonocytic leukemia. Alternatively spliced NF1 mRNA transcripts have been isolated, although their functions, if any, remain unclear.

Synonyms: NF1,NF-1

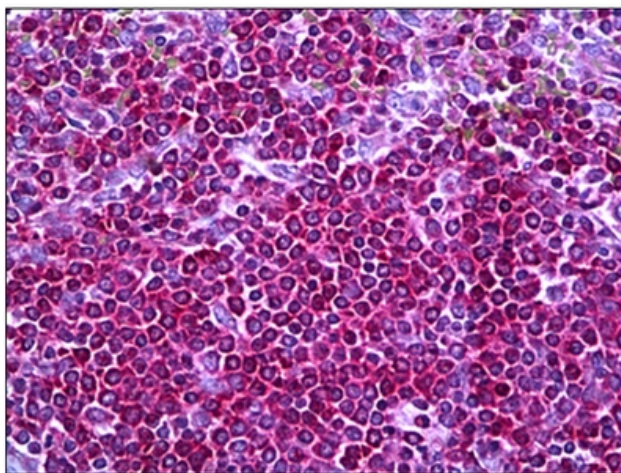
Protein Families: Druggable Genome

Protein Pathways: MAPK signaling pathway

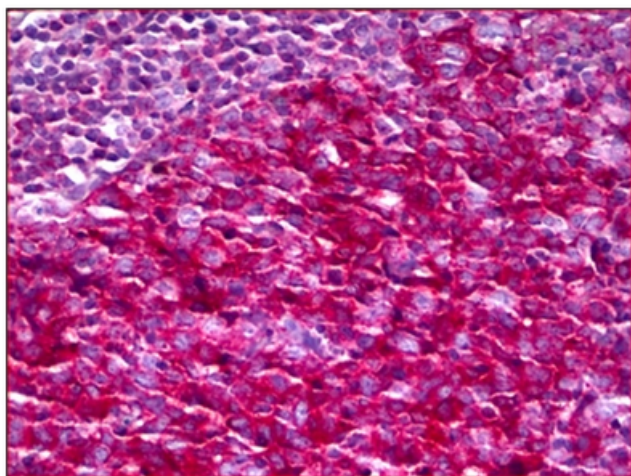
Product images:



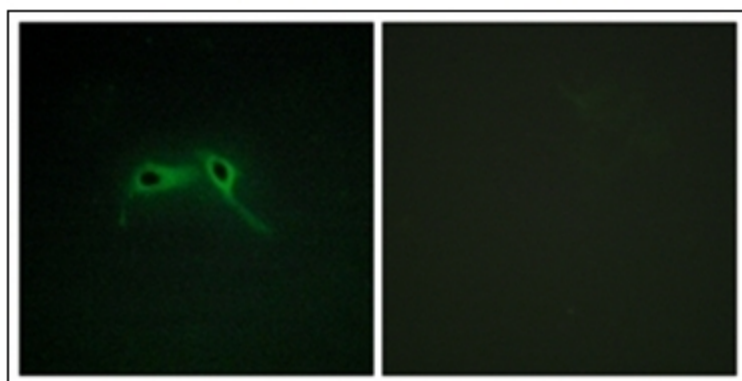
Western blot analysis of extracts from HepG2 cells, using NF1 Antibody. The lane on the right is treated with the synthesized peptide.



Human Spleen: Formalin-Fixed, Paraffin-Embedded (FFPE)



Human Tonsil: Formalin-Fixed, Paraffin-Embedded (FFPE)



Immunofluorescence analysis of HepG2 cells, using NF1 Antibody. The picture on the right is treated with the synthesized peptide.