

Product datasheet for **AP31758PU-N**

NSE (ENO2) (C-term) Rabbit Polyclonal Antibody

Product data:

Product Type:	Primary Antibodies
Applications:	ELISA, IF, IHC, WB
Recommended Dilution:	ELISA: 1/5000. Immunofluorescence: 1/100 - 1/500. Immunohistochemistry on Paraffin Sections: 1/100. Western Blot: 1/500 - 1/1000.
Reactivity:	Human, Mouse, Rat
Host:	Rabbit
Isotype:	IgG
Clonality:	Polyclonal
Immunogen:	Synthetic peptide from Human NSE. Epitope: C-terminus.
Specificity:	This antibody detects endogenous levels of total NSE protein.
Formulation:	PBS (without Mg ²⁺ , Ca ²⁺), pH 7.4, 150 mM Sodium Chloride, 0.02% Sodium Azide and 50% Glycerol State: Aff - Purified State: Liquid purified Ig fraction
Concentration:	lot specific
Purification:	Immunoaffinity Chromatography
Conjugation:	Unconjugated
Storage:	Store the antibody undiluted at 2-8°C for one month or (in aliquots) at -20°C for longer. Avoid repeated freezing and thawing.
Stability:	Shelf life: one year from despatch.
Gene Name:	enolase 2
Database Link:	Entrez Gene 13807 Mouse Entrez Gene 24334 Rat Entrez Gene 2026 Human P09104



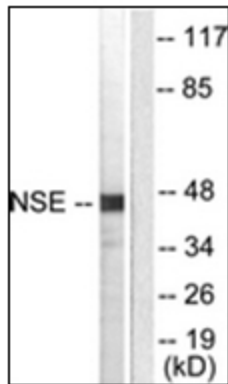
[View online »](#)

Background: This gene encodes one of the three enolase isoenzymes found in mammals. This isoenzyme, a homodimer, is found in mature neurons and cells of neuronal origin. A switch from alpha enolase to gamma enolase occurs in neural tissue during development in rats and primates.

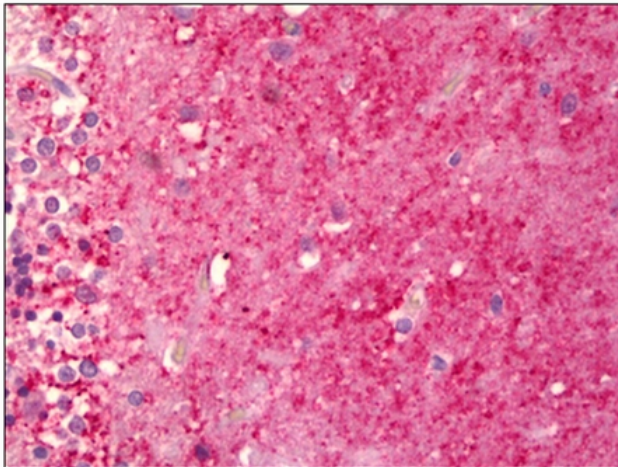
Synonyms: NSE, ENO2, Enolase 2, Neural enolase, Gamma-enolase

Protein Pathways: Glycolysis / Gluconeogenesis, Metabolic pathways, RNA degradation

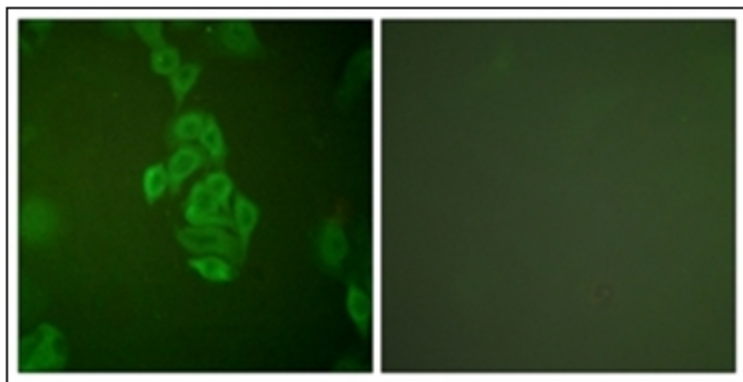
Product images:



Western blot analysis of extracts from HepG2 cells, using NSE Antibody. The lane on the right is treated with the synthesized peptide.



Human Brain Cerebellum, Neuropil: Formalin-Fixed, Paraffin-Embedded (FFPE)



Immunofluorescence analysis of A549 cells, using NSE Antibody. The picture on the right is treated with the synthesized peptide.