

Product datasheet for **AP31757PU-N**

C1R Rabbit Polyclonal Antibody

Product data:

Product Type:	Primary Antibodies
Applications:	ELISA, IHC, WB
Recommended Dilution:	ELISA: 1/20000. Immunohistochemistry on Paraffin Sections: 1/200. Western Blot: 1/500 - 1/1000.
Reactivity:	Human
Host:	Rabbit
Isotype:	IgG
Clonality:	Polyclonal
Immunogen:	Synthetic peptide from Human C1R. Epitope: Amino Acids 445-494.
Specificity:	This antibody detects endogenous levels of fragment of activated C1R resulting from cleavage adjacent to Ile464.
Formulation:	PBS (without Mg ²⁺ , Ca ²⁺), pH 7.4, 150 mM Sodium Chloride, 0.02% Sodium Azide and 50% Glycerol State: Aff - Purified State: Liquid purified Ig fraction
Concentration:	lot specific
Purification:	Immunoaffinity Chromatography
Conjugation:	Unconjugated
Storage:	Store undiluted at 2-8°C for one month or (in aliquots) at -20°C for longer. Avoid repeated freezing and thawing.
Stability:	Shelf life: one year from despatch.
Gene Name:	complement C1r subcomponent
Database Link:	Entrez Gene 715 Human P00736



[View online »](#)

Background:

C1 component of human complement is a complex of three glycoproteins: C1q, C1r and C1s. C1r has a molecular weight of 83,000 and is present in plasma in an average concentration of 50 mg/ml, either as a complex with C1q and C1s or in the absence of C1q as a tetramer with C1s. The subcomponents of the C1 complex are responsible for the initiation of the classical pathway of complement activation.

Synonyms:

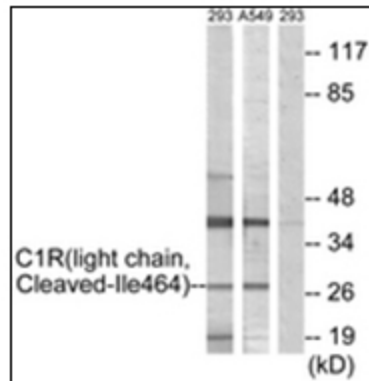
Complement C1r, Complement 1r

Protein Families:

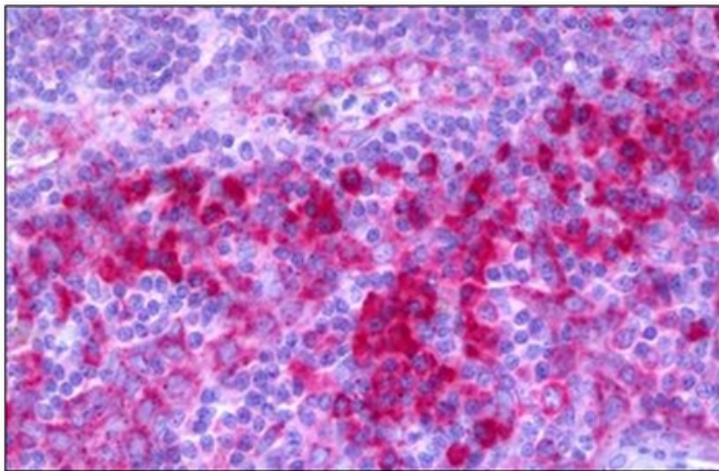
Druggable Genome, Protease

Protein Pathways:

Complement and coagulation cascades, Systemic lupus erythematosus

Product images:


Western blot analysis of extracts from 293/A549 cells, treated with etoposide 25uM 1h, using. The lane on the right is treated with the synthesized peptide.



Human Tonsil: Formalin-Fixed, Paraffin-Embedded (FFPE)