

Product datasheet for **AP31756PU-N**

ACAT1 Rabbit Polyclonal Antibody

Product data:

Product Type:	Primary Antibodies
Applications:	ELISA, IHC, WB
Recommended Dilution:	ELISA: 1/40000. Immunohistochemistry on Paraffin Sections: 1/200. Western Blot: 1/500 - 1/1000.
Reactivity:	Human, Mouse, Rat
Host:	Rabbit
Isotype:	IgG
Clonality:	Polyclonal
Immunogen:	Synthetic peptide from Human ACAT1. Epitope: Internal.
Specificity:	This antibody detects endogenous levels of total ACAT1 protein.
Formulation:	PBS (without Mg ²⁺ , Ca ²⁺), pH 7.4, 150 mM Sodium Chloride, 0.02% Sodium Azide and 50% Glycerol State: Aff - Purified State: Liquid purified Ig fraction
Concentration:	lot specific
Purification:	Immunoaffinity Chromatography
Conjugation:	Unconjugated
Storage:	Store the antibody undiluted at 2-8°C for one month or (in aliquots) at -20°C for longer. Avoid repeated freezing and thawing.
Stability:	Shelf life: one year from despatch.
Gene Name:	acetyl-CoA acetyltransferase 1
Database Link:	Entrez Gene 25014 Rat Entrez Gene 110446 Mouse Entrez Gene 38 Human P24752



[View online »](#)

Background:

The ACAT1 mRNA encodes a mitochondrially localized enzyme that catalyzes the reversible formation of acetoacetyl-CoA from two molecules of acetyl-CoA. The ACAT gene spans approximately 27 kb and contains 12 exons interrupted by 11 introns. Defects in this gene are associated with the alpha-methylacetoaceticaciduria disorder, an inborn error of isoleucine catabolism characterized by urinary excretion of 2-methyl-3-hydroxybutyric acid, 2-methylacetoacetic acid, tiglylglycine, and butanone.

Synonyms:

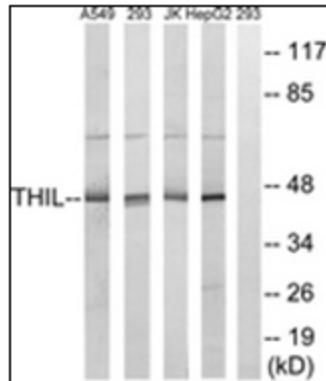
ACAT; MAT; T2; THIL

Protein Families:

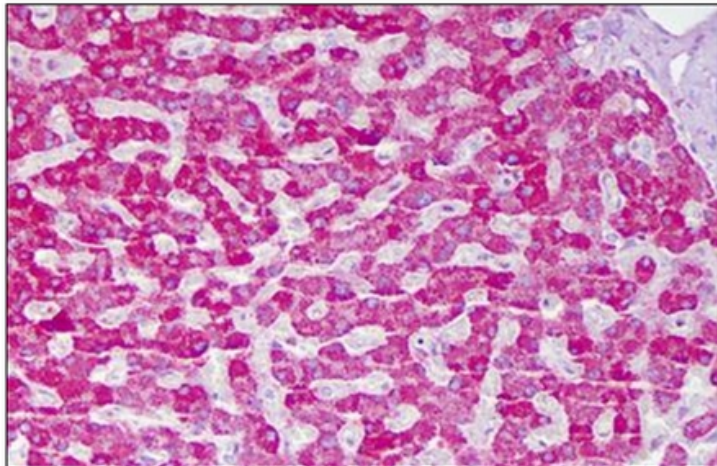
Druggable Genome

Protein Pathways:

Butanoate metabolism, Fatty acid metabolism, Lysine degradation, Metabolic pathways, Propanoate metabolism, Pyruvate metabolism, Synthesis and degradation of ketone bodies, Terpenoid backbone biosynthesis, Tryptophan metabolism, Valine, leucine and isoleucine degradation

Product images:


Western blot analysis of extracts from HepG2/Jurkat/293/A549 cells, using the antibody. The lane on the right is treated with the synthesized peptide.



Human Liver, Hepatocytes: Formalin-Fixed, Paraffin-Embedded (FFPE)