

## Product datasheet for **AP31755PU-N**

### NPY5R Rabbit Polyclonal Antibody

#### Product data:

Product Type:	Primary Antibodies
Applications:	ELISA, IF, IHC, WB
Recommended Dilution:	<b>ELISA:</b> 1/20000. <b>Immunofluorescence:</b> 1/100 - 1/500. <b>Immunohistochemistry on Paraffin Sections:</b> 1/200 - 1/400. <b>Western Blot:</b> 1/500 - 1/1000.
Reactivity:	Human, Mouse, Rat
Host:	Rabbit
Isotype:	IgG
Clonality:	Polyclonal
Immunogen:	Synthetic peptide from Human NPY5R. Epitope: Internal.
Specificity:	Detects endogenous levels of total NPY5R protein.
Formulation:	PBS (without Mg <sup>2+</sup> , Ca <sup>2+</sup> ), pH 7.4, 150 mM Sodium Chloride, 0.02% Sodium Azide and 50% Glycerol State: Purified State: Liquid purified Ig fraction
Concentration:	lot specific
Purification:	Immunoaffinity Chromatography
Conjugation:	Unconjugated
Storage:	Store the antibody (in aliquots) at -20°C. Avoid repeated freezing and thawing.
Stability:	Shelf life: one year from despatch.
Gene Name:	neuropeptide Y receptor Y5
Database Link:	<a href="#">Entrez Gene 18168 Mouse</a> <a href="#">Entrez Gene 25340 Rat</a> <a href="#">Entrez Gene 4889 Human Q15761</a>



[View online »](#)

**Background:**

NPY5R, a Neuropeptide Receptor GPCR, has been suggested to be the main receptor mediating NPY-induced food intake in rats. Pancreatic polypeptide (PP), neuropeptide Y (NPY), and peptide YY (PYY) are related 36-amino acid hormones. A number of structurally related receptors for these peptides have been isolated, NPY1-R, NPY2-R, NPY3-R, NPY4-R, NPY5-R, and NPY6-R. NPY4-R is expressed in several human tissues, including brain, coronary artery, and ileum. NPY4-R maps to human chromosome 10q11.2-q21.2. NPY-5R, isolated from rat hypothalamus, encodes a 456-amino acid protein with less than 35% overall identity to known Y-type receptors. The human NPY-5R sequence is nearly identical to, but in the opposite orientation from, that of the human NPY-1R sequence. NPY5-R localizes to the paraventricular hypothalamic nucleus, the lateral hypothalamus, and other locations consistent with a role in the control of feeding behavior. The gene which encodes NPY-5R maps to human chromosome 4q31-32. NPY-6R is abundantly expressed in human heart and skeletal muscle and the gene which encodes NPY-6R maps to human chromosome 5q31.

**Synonyms:**

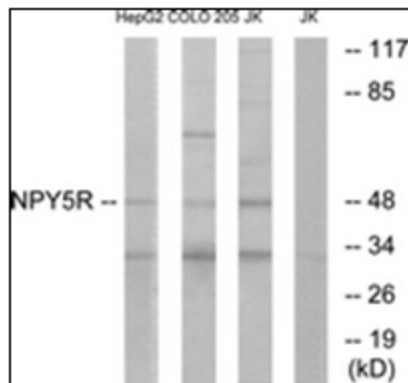
NPY5-R, NPY-Y5 receptor, NPY5, NPYR5, Neuropeptide Y receptor 5

**Protein Families:**

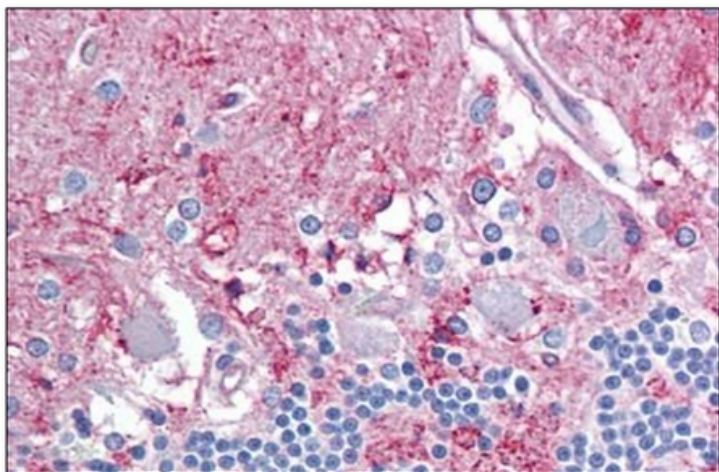
Druggable Genome, GPCR, Transmembrane

**Protein Pathways:**

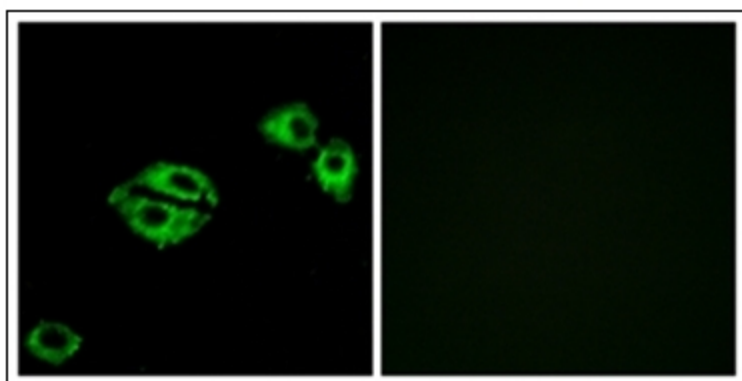
Neuroactive ligand-receptor interaction

**Product images:**

Western blot analysis of extracts from COLO/Jurkat/HepG2 cells, using antibody. The lane on the right is treated with the synthesized peptide.



Human Brain, Cerebellum: Formalin-Fixed, Paraffin-Embedded (FFPE)



Immunofluorescence analysis of A549 cells, using NPY5R Antibody. The picture on the right is treated with the synthesized peptide.