

Product datasheet for **AP31754PU-N**

PTTG1IP Rabbit Polyclonal Antibody

Product data:

Product Type:	Primary Antibodies
Applications:	ELISA, IHC, WB
Recommended Dilution:	ELISA: 1/10000. Immunohistochemistry on Paraffin Sections: 1/200. Western Blot: 1/500 - 1/1000.
Reactivity:	Human, Mouse, Rat
Host:	Rabbit
Isotype:	IgG
Clonality:	Polyclonal
Immunogen:	Synthetic peptide from Human PTTG. Epitope: Internal.
Specificity:	This antibody detects endogenous levels of total PTTG protein.
Formulation:	PBS (without Mg ²⁺ , Ca ²⁺), pH 7.4, 150 mM Sodium Chloride, 0.02% Sodium Azide and 50% Glycerol State: Aff - Purified State: Liquid purified Ig fraction
Concentration:	lot specific
Purification:	Immunoaffinity Chromatography
Conjugation:	Unconjugated
Storage:	Store the antibody undiluted at 2-8°C for one month or (in aliquots) at -20°C for longer. Avoid repeated freezing and thawing.
Stability:	Shelf life: one year from despatch.
Gene Name:	pituitary tumor-transforming 1 interacting protein
Database Link:	Entrez Gene 108705 Mouse Entrez Gene 365548 Rat Entrez Gene 754 Human P53801



[View online »](#)

Background:

The encoded protein, which directly binds to pituitary tumor-transforming protein-1 (PTTG1), facilitates the nuclear translocation of PTTG1 and potentiates the transcriptional activation of basic fibroblast growth factor by PTTG1. The gene product localizes to both the cytoplasm and nucleus. Its NLS is required for its own nuclear localization, the nuclear localization of PTTG1, and its interaction with PTTG1.

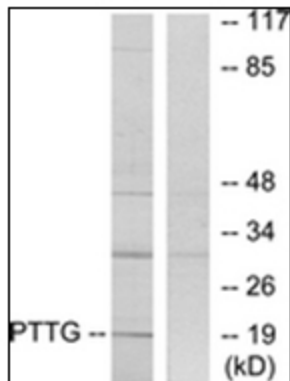
Synonyms:

PTTG-binding factor, PBF, C21orf1, C21orf3

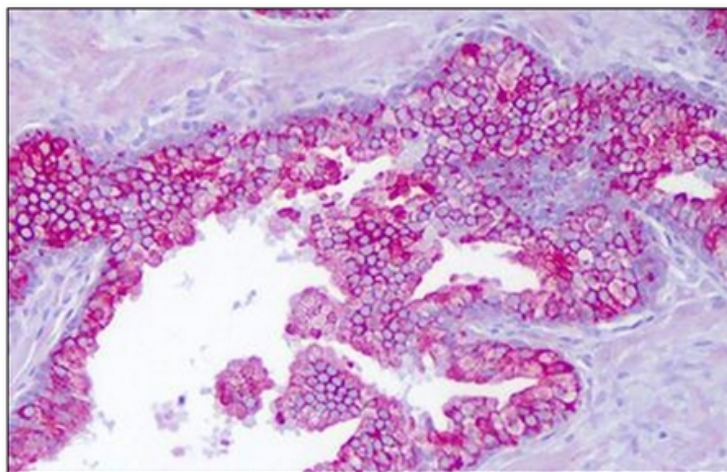
Protein Families:

Druggable Genome, Transmembrane

Product images:



Western blot analysis of extracts from RAW264.7 cells, using the antibody. The lane on the right is treated with the synthesized peptide.



Human Prostate, Epithelium: Formalin-Fixed, Paraffin-Embedded (FFPE)