

## Product datasheet for **AP31752PU-N**

### RPS6 (C-term) Rabbit Polyclonal Antibody

#### Product data:

Product Type:	Primary Antibodies
Applications:	ELISA, IF, IHC, WB
Recommended Dilution:	<b>ELISA:</b> 1/1000. <b>Immunofluorescence:</b> 1/100 - 1/500. <b>Immunohistochemistry on Paraffin Sections:</b> 1/200 - 1/400. <b>Western Blot:</b> 1/500 - 1/1000.
Reactivity:	Human, Mouse, Rat
Host:	Rabbit
Isotype:	IgG
Clonality:	Polyclonal
Immunogen:	Synthetic peptide from Human S6 Ribosomal Protein. Epitope: C-Terminus.
Specificity:	This antibody detects endogenous levels of total S6 Ribosomal Protein protein.
Formulation:	PBS (without Mg <sup>2+</sup> , Ca <sup>2+</sup> ), pH 7.4, 150 mM Sodium Chloride, 0.02% Sodium Azide and 50% Glycerol State: Purified State: Liquid purified Ig fraction
Concentration:	lot specific
Purification:	Immunoaffinity Chromatography
Conjugation:	Unconjugated
Storage:	Store the antibody (in aliquots) at -20°C. Avoid repeated freezing and thawing.
Stability:	Shelf life: one year from despatch.
Gene Name:	ribosomal protein S6
Database Link:	<a href="#">Entrez Gene 20104 Mouse</a> <a href="#">Entrez Gene 29304 Rat</a> <a href="#">Entrez Gene 6194 Human P62753</a>



[View online »](#)

**Background:**

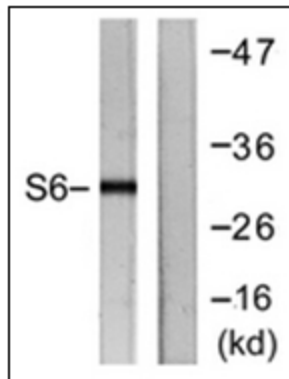
40S ribosomal protein S6 (also known as RPS6) is a ~31 kDa substrate of p70 S6 kinase (p70S6K) and a major component of translational machinery involved in protein synthesis, cell growth, proliferation, and metabolism. RPS6 undergoes phosphorylation on multiple serines in the carboxyl terminal region in the order 236-->235-->240-->244-->247, due to the positions of these amino acid residues on the alpha-helix. Hyperphosphorylation of RPS6 stimulates protein synthesis that mediates progression through the cell cycle.

**Synonyms:**

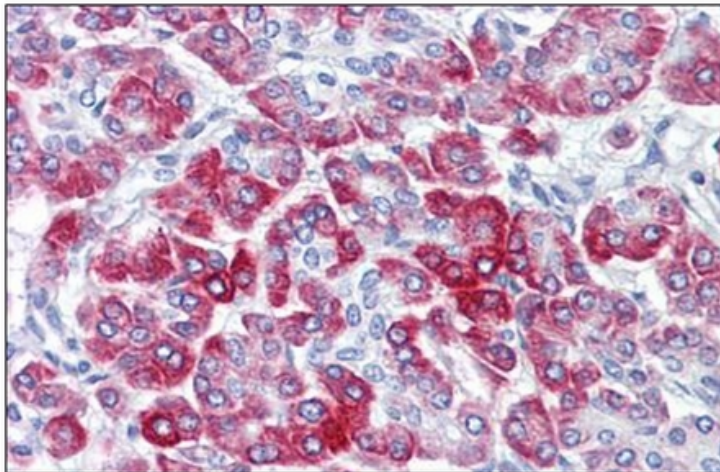
Phosphoprotein NP33, 40S ribosomal protein S6

**Protein Pathways:**

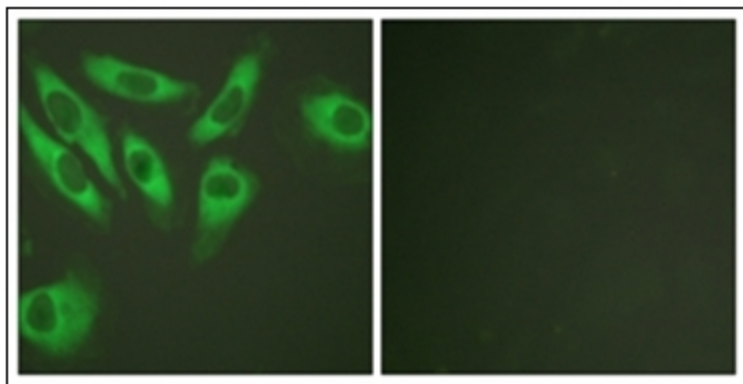
Insulin signaling pathway, mTOR signaling pathway, Ribosome

**Product images:**

Western blot analysis of extracts from HeLa cells, treated with TNF- $\alpha$  20ng/ml 2', using antibody. The lane on the right is treated with the synthesized peptide.



Human Pancreas: Formalin-Fixed, Paraffin-Embedded (FFPE)



Immunofluorescence analysis of HeLa cells, using S6 Ribosomal Protein Antibody. The picture on the right is treated with the synthesized peptide.