

## Product datasheet for **AP31750PU-N**

### ATF 4 (ATF4) Rabbit Polyclonal Antibody

#### Product data:

Product Type:	Primary Antibodies
Applications:	ELISA, IHC, WB
Recommended Dilution:	<b>ELISA:</b> 1/20000. <b>Immunohistochemistry on Paraffin Sections:</b> 2 µg/ml. <b>Western Blot:</b> 1/500.
Reactivity:	Human, Mouse, Rat
Host:	Rabbit
Isotype:	IgG
Clonality:	Polyclonal
Immunogen:	Synthetic peptide.
Specificity:	This antibody detects endogenous levels of ATF4 protein. Not tested with other proteins.
Formulation:	PBS, pH 7.4 containing 0.05% Sodium Azide as preservative State: Purified State: Liquid purified Ig fraction
Concentration:	lot specific
Conjugation:	Unconjugated
Storage:	Store undiluted at 2-8°C for one month or (in aliquots) at -20°C for longer. Avoid repeated freezing and thawing.
Stability:	Shelf life: one year from despatch.
Gene Name:	activating transcription factor 4
Database Link:	<a href="#">Entrez Gene 11911 Mouse</a> <a href="#">Entrez Gene 79255 Rat</a> <a href="#">Entrez Gene 468 Human</a> <a href="#">P18848</a>



[View online »](#)

**Background:**

Activating transcription factor 4 (ATF4) was initially identified as a widely expressed mammalian DNA binding protein that could bind tax-responsive enhancer element within the LTR of HTLV-1. In a later study, it was isolated and characterized as cAMP-response element binding protein 2 (CREB-2). However, this sequence (M86842) has no sequence similarity with the CREB2 gene. ATF4 belongs to a family of DNA-binding proteins including the AP-1 family of transcription factors and cAMP-response element binding proteins (CREBs) and CREB-like proteins. ATF4 gene encodes a 351 amino acid protein that contains a leucine zipper structure (protein-protein interaction) located C-terminal to a stretch of basic amino acids (DNA binding), a characteristic of its family of transcription factors. ATF4 was shown to bind and negatively regulate transcription from the cAMP response element. It is widely expressed in human tissues suggesting that it may be involved in regulating transcription in a wide variety of cell types.

**Synonyms:**

CREB2, CREB-2, TXREB, Activating transcription factor 4, ATF-4

**Protein Families:**

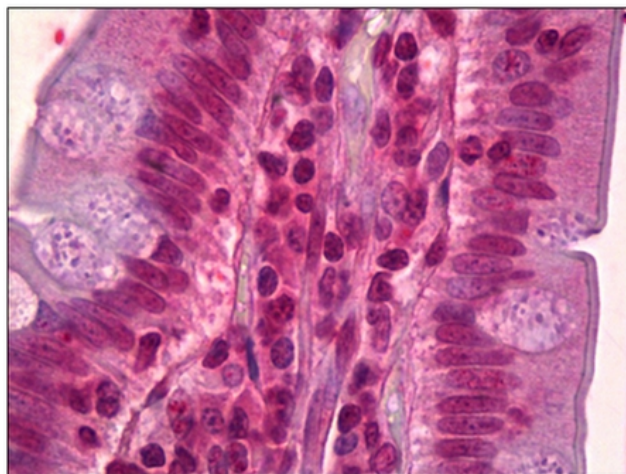
Transcription Factors

**Protein Pathways:**

GnRH signaling pathway, Long-term potentiation, MAPK signaling pathway, Neurotrophin signaling pathway, Prostate cancer

**Product images:**

Western Blot analysis of HeLa cell lysates with anti-ATF4 antibody at 1/500 dilutions.



Human Small Intestine: Formalin-Fixed, Paraffin-Embedded (FFPE).