

## Product datasheet for **AP31746PU-N**

### ABCB5 Rabbit Polyclonal Antibody

#### Product data:

Product Type:	Primary Antibodies
Applications:	IHC, WB
Recommended Dilution:	<b>Immunohistochemistry on Paraffin Sections:</b> 2.5 µg/ml. <b>Western Blot:</b> 1/1000 - 1/4000.
Reactivity:	Human
Host:	Rabbit
Isotype:	IgG
Clonality:	Polyclonal
Immunogen:	Synthetic peptide
Specificity:	This Polyclonal antibody is directed against Human ABCB5 protein. Cross-reactivity with ABCB5 from other sources has not been determined.
Formulation:	PBS, pH 7.4 containing 0.02% Sodium Azide as preservative State: Aff - Purified State: Liquid purified Ig fraction
Concentration:	lot specific
Purification:	Affinity Chromatography on Protein A
Conjugation:	Unconjugated
Storage:	Store the antibody undiluted at 2-8°C for one month or (in aliquots) at -20°C for longer. Avoid repeated freezing and thawing.
Stability:	Shelf life: one year from despatch.
Gene Name:	ATP binding cassette subfamily B member 5
Database Link:	<a href="#">Entrez Gene 340273 Human Q2M3G0</a>
Background:	ABCB5 is a plasma membrane transporter able to mediate efflux from cells of the rhodamine dye and of the therapeutic drug doxorubicin. ABCB5 is also responsible for the resistance to doxorubicin of a subset of malignant melanomas. ABCB5 has more recently been identified as a marker for human malignant-melanoma-initiating cells.
Synonyms:	ABCB5alpha; ABCB5beta; EST422562

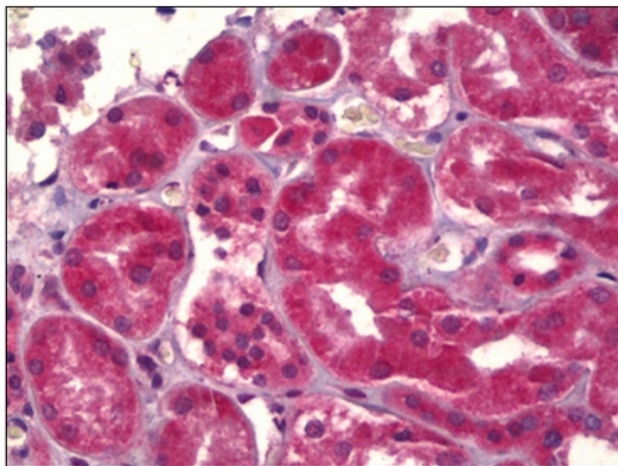


[View online »](#)

Protein Families: Druggable Genome, Transmembrane

Protein Pathways: ABC transporters

**Product images:**



Human Kidney: Formalin-Fixed, Paraffin-Embedded (FFPE)