

Product datasheet for **AP31743PU-N**

Cannabinoid Receptor II (CNR2) Rabbit Polyclonal Antibody

Product data:

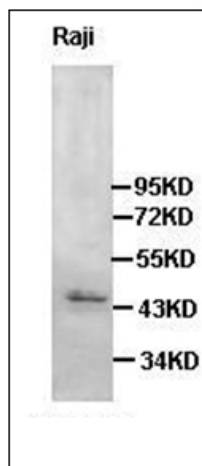
Product Type:	Primary Antibodies
Applications:	IHC, WB
Recommended Dilution:	Immunohistochemistry on Paraffin Sections: 2 µg/ml. Western Blot.
Reactivity:	Human
Host:	Rabbit
Isotype:	IgG
Clonality:	Polyclonal
Immunogen:	Recombinant protein
Specificity:	Recognizes CNR2 / CB2
Formulation:	PBS, pH 7.4 containing 0.02% Sodium Azide as preservative State: Aff - Purified State: Liquid purified Ig fraction
Concentration:	lot specific
Purification:	Affinity Chromatography
Conjugation:	Unconjugated
Storage:	Store the antibody undiluted at 2-8°C for one month or (in aliquots) at -20°C for longer. Avoid repeated freezing and thawing.
Stability:	Shelf life: one year from despatch.
Gene Name:	cannabinoid receptor 2
Database Link:	Entrez Gene 1269 Human P34972
Background:	CB2 Cannabinoid receptors are present in the immune system and are associated with producing antinociception to external stimuli, such as temperature. Unlike CB(1) receptors, CB(2) receptors are expressed in the periphery, and not the central nervous system.
Synonyms:	CB-2, hCB2, CB2, CNR2, CX5
Protein Families:	Druggable Genome, GPCR, Transmembrane



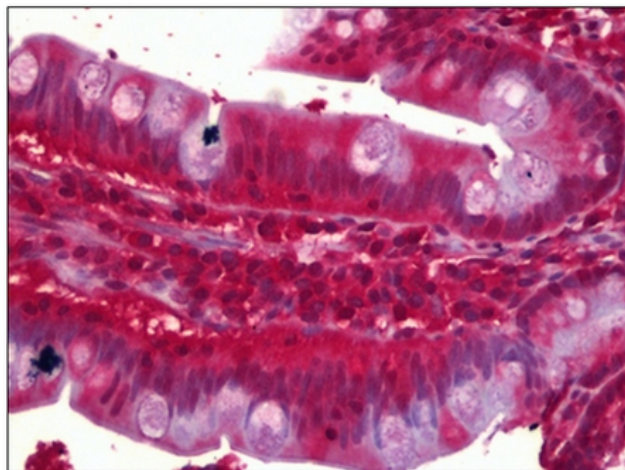
[View online »](#)

Protein Pathways: Neuroactive ligand-receptor interaction

Product images:



Western Blot analysis of Raji cell lysate with anti-Cannabinoid Receptor 2 antibody at 1/500 dilution.



Human Small Intestine: Formalin-Fixed, Paraffin-Embedded (FFPE)