

Product datasheet for **AP31741PU-N**

alpha 1 Fetoprotein (AFP) Rabbit Polyclonal Antibody

Product data:

Product Type:	Primary Antibodies
Applications:	ELISA, IHC, WB
Recommended Dilution:	ELISA. Immunohistochemistry on Paraffin Sections: 2.5 µg/ml. Western Blot.
Reactivity:	Human
Host:	Rabbit
Isotype:	IgG
Clonality:	Polyclonal
Immunogen:	Synthetic peptide corresponding to the internal region
Specificity:	Recognizes Alpha-fetoprotein (AFP)
Formulation:	PBS, pH 7.4 containing 0.02% Sodium Azide as preservative State: Aff - Purified State: Liquid purified Ig fraction
Concentration:	lot specific
Purification:	Affinity Chromatography
Conjugation:	Unconjugated
Storage:	Store the antibody undiluted at 2-8°C for one month or (in aliquots) at -20°C for longer. Avoid repeated freezing and thawing.
Stability:	Shelf life: one year from despatch.
Gene Name:	alpha fetoprotein
Database Link:	Entrez Gene 174 Human P02771



[View online »](#)

Background:

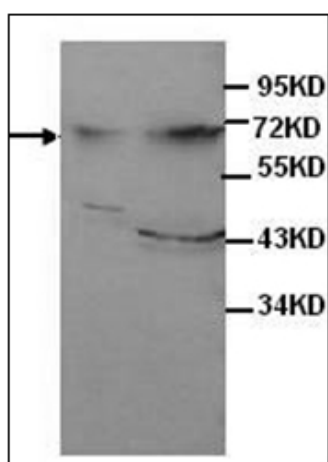
Alpha Fetoprotein is a major plasma protein produced by the yolk sac and the liver during fetal life. alpha Fetoprotein expression in adults is often associated with hepatoma or teratoma. However, hereditary persistence of alpha Fetoprotein may also be found in individuals with no obvious pathology. The protein is thought to be the fetal counterpart of serum albumin, and the alpha Fetoprotein and albumin genes are present in tandem in the same transcriptional orientation on chromosome 4. alpha Fetoprotein is found in monomeric as well as dimeric and trimeric forms, and binds copper, nickel, fatty acids and bilirubin. The level of alpha Fetoprotein in amniotic fluid is used to measure renal loss of protein to screen for spina bifida and anencephaly.

Synonyms:

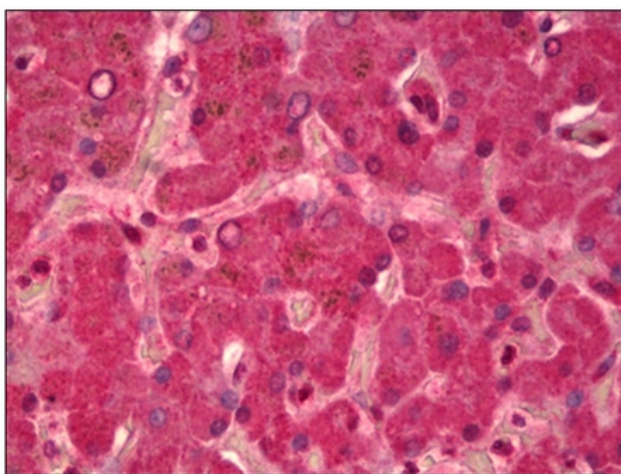
Alpha-1-fetoprotein, Alpha-fetoglobulin, HPAFP

Protein Families:

Druggable Genome, Secreted Protein

Product images:

Western Blot analysis of HepG2 cell and fetal liver lysates with anti AFP antibody at 1/250 dilution.



Human Liver: Formalin-Fixed, Paraffin-Embedded (FFPE)