

Product datasheet for **AP31739PU-N**

MAPK15 (1-245) Rabbit Polyclonal Antibody

Product data:

Product Type:	Primary Antibodies
Applications:	IF, IHC, WB
Recommended Dilution:	Immunocytochemistry: 1/100 - 1/200. Immunofluorescence: 1/100 - 1/200. Immunohistochemistry on Paraffin Sections: 10 µg/ml. Western Blot: 1/500 - 1/3000.
Reactivity:	Human
Host:	Rabbit
Isotype:	IgG
Clonality:	Polyclonal
Immunogen:	Recombinant protein fragment contain a sequence corresponding to a region within amino acids 1 and 245 of Human MAPK15
Specificity:	Recognizes Human MAPK15.
Formulation:	0.1 M Tris-glycine, pH 7, 10% Glycerol and 0.01% Thimerosal State: Aff - Purified State: Liquid purified Ig fraction
Concentration:	lot specific
Purification:	Immunoaffinity Chromatography
Conjugation:	Unconjugated
Storage:	Store the antibody undiluted at 2-8°C for one month or (in aliquots) at -20°C for longer. Avoid repeated freezing and thawing.
Stability:	Shelf life: one year from despatch.
Gene Name:	mitogen-activated protein kinase 15
Database Link:	Entrez Gene 225689 Human Q8TD08
Background:	ERK8 is a MAPK type protein kinase that is activated by a Src-dependent signaling pathway. The protein contains two SH3-binding motifs in its C-terminal region and has been shown to associate with the c-Src SH3 domain in vitro and co-immunoprecipitate with c-Src in vivo.

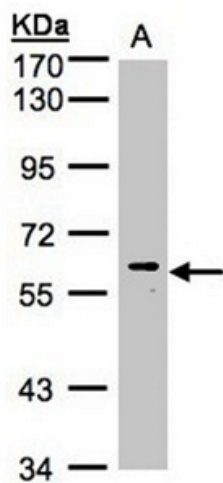


[View online »](#)

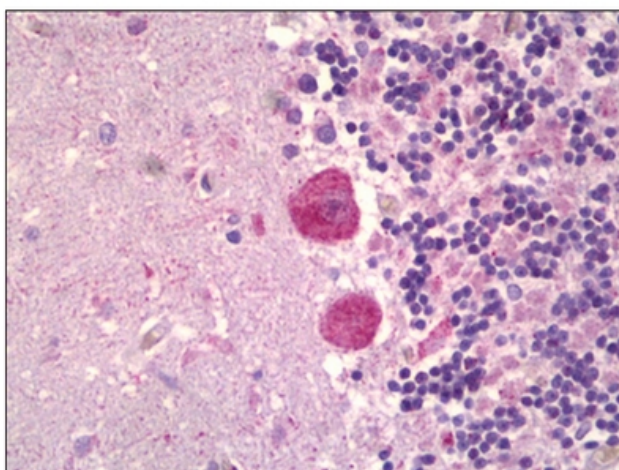
Synonyms: Mitogen-activated protein kinase 15, ERK8

Protein Families: Druggable Genome, Protein Kinase

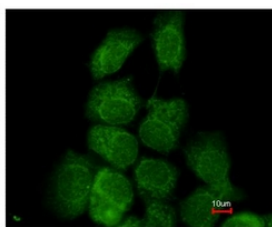
Product images:



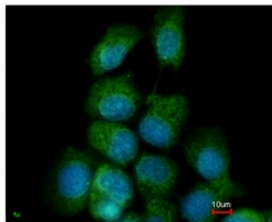
Western Blot analysis using MAPK15 antibody at 1/1000 dilution. A: 30 ug of HeLa S3 whole cell lysate, 7.5% SDS PAGE



Human Brain, Cerebellum: Formalin-Fixed, Paraffin-Embedded (FFPE)



Costained with Hoechst 33342



Immunofluorescence analysis of methanol-fixed A431, using MAPK15 antibody. at 1/200 dilution.