

## Product datasheet for **AP31738SU-N**

### Fibrillin 2 (FBN2) Rabbit Polyclonal Antibody

#### Product data:

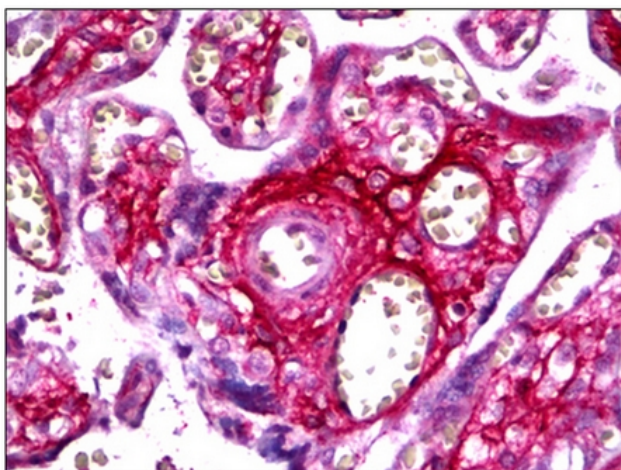
Product Type:	Primary Antibodies
Applications:	ELISA, IF, IHC, IP, WB
Recommended Dilution:	<b>ELISA:</b> 1/1000 - 1/2000. <b>Immunocytochemistry:</b> 1/50 - 1/100. <b>Immunohistochemistry on Paraffin Sections:</b> 1/100. <b>Immunoprecipitation:</b> 1/100 - 1/200. <b>Western Blot:</b> 1/200 - 1/500.
Reactivity:	Bovine, Human
Host:	Rabbit
Isotype:	IgG
Clonality:	Polyclonal
Immunogen:	Protein fragment containing glycine-rich domain of exon 10 of Human Fibrillin-2.
Specificity:	Reacts strongly with Human and Bovine Fibrillin-2. No cross-reactivity with Fibrillin-1.
Formulation:	PBS State: Serum State: Antiserum
Conjugation:	Unconjugated
Storage:	Store the antibody undiluted at 2-8°C for one month or (in aliquots) at -20°C for longer. Avoid repeated freezing and thawing.
Stability:	Shelf life: one year from despatch.
Gene Name:	fibrillin 2
Database Link:	<a href="#">Entrez Gene 2201 Human P35556</a>
Background:	Fibrillin 2 is an extracellular matrix protein, which may regulate the formation and maintenance of extracellular microfibrils. Mutations in FBN2 may cause congenital contractural arachnodactyly.
Synonyms:	FBN2



[View online »](#)

Protein Families: Druggable Genome, Transmembrane

**Product images:**



Human Prostate, Extra Cellular: Formalin-Fixed, Paraffin-Embedded (FFPE)