

Product datasheet for **AP31737SU-N**

GFAP Chicken Polyclonal Antibody

Product data:

Product Type:	Primary Antibodies
Applications:	IF, IHC, WB
Recommended Dilution:	Immunocytochemistry: 1/100. Immunofluorescence: 1/100 - 1/200. Immunohistochemistry on Paraffin Sections: 1/100. Western Blot: 1/500.
Reactivity:	Human, Mouse
Host:	Chicken
Isotype:	IgY
Clonality:	Polyclonal
Immunogen:	GFAP antibody was raised against full-length recombinant mouse GFAP
Specificity:	Recognizes Mouse GFAP and cross-reacts with Human.
Formulation:	PBS, pH 7.2, 0.02% Sodium Azide as preservative. State: Serum State: Unpurified Serum
Concentration:	lot specific
Conjugation:	Unconjugated
Storage:	Store the antibody undiluted at 2-8°C for one month or (in aliquots) at -20°C for longer. Avoid repeated freezing and thawing.
Stability:	Shelf life: one year from despatch.
Gene Name:	glial fibrillary acidic protein
Database Link:	<u>Entrez Gene 14580 Mouse</u> <u>Entrez Gene 2670 Human</u> <u>P14136</u>



[View online »](#)

Background:

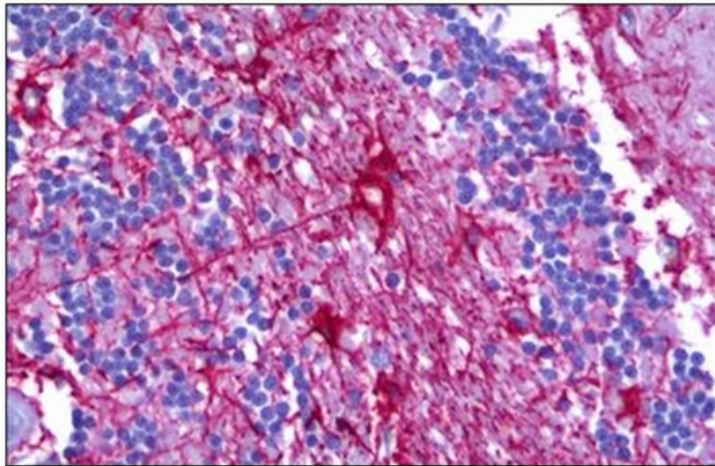
Glial fibrillary acidic protein (GFAP) is a member of the class III intermediate filament protein family. It is heavily, and specifically, expressed in astrocytes and certain other astroglia in the central nervous system, in satellite cells in peripheral ganglia, and in non myelinating Schwann cells in peripheral nerves. In addition, neural stem cells frequently strongly express GFAP. Antibodies to GFAP are therefore very useful as markers of astrocytic cells. In addition many types of brain tumor, presumably derived from astrocytic cells, heavily express GFAP. GFAP is also found in the lens epithelium, Kupffer cells of the liver, in some cells in salivary tumors and has been reported in erythrocytes.

Synonyms:

Glial Fibrillary Acidic Protein

Protein Families:

ES Cell Differentiation/IPS

Product images:

Formalin-Fixed, Paraffin-Embedded Human Brain, Astrocytes stained with GF-N at 1/100 dilution after heat-induced antigen retrieval.