

Product datasheet for **AP31726PU-N**

TIE1 Rabbit Polyclonal Antibody

Product data:

Product Type:	Primary Antibodies
Applications:	WB
Recommended Dilution:	Western Blot: 2-5 µg/ml.
Reactivity:	Human, Mouse
Host:	Rabbit
Isotype:	IgG
Clonality:	Polyclonal
Immunogen:	Highly pure (> 95%) recombinant Mouse soluble TIE-1 (Ser22-Ala748) derived from Insect cells (Cat.-No AR31061PU)
Specificity:	Recognizes Mouse TIE-1 and cross reacts with Human TIE-1 .
Formulation:	PBS, pH 7.2 State: Purified State: Liquid purified IgG fraction
Reconstitution Method:	Restore in sterile water to a concentration of 0.1-1.0 mg/ml. Centrifuge vial prior to opening.
Purification:	Protein A Chromatography
Conjugation:	Unconjugated
Storage:	Store lyophilized at 2-8°C for 6 months or at -20°C long term. After reconstitution store the antibody undiluted at 2-8°C for one month or (in aliquots) at -20°C long term. Avoid repeated freezing and thawing.
Stability:	Shelf life: one year from despatch.
Gene Name:	tyrosine kinase with immunoglobulin-like and EGF-like domains 1
Database Link:	Entrez Gene 21846 Mouse Q06806



[View online »](#)

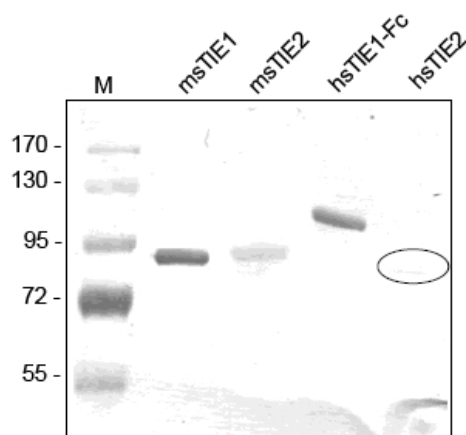
Background:

TIE-1 (tyrosine kinase with Ig and EGF homology domains 1) and TIE-2/Tek comprise a receptor tyrosine kinase (RTK) subfamily with unique structural characteristics: two immunoglobulin-like domains flanking three epidermal growth factor (EGF)-like domains and followed by three fibronectin type III-like repeats in the extracellular region and a split tyrosine kinase domain in the cytoplasmic region.

These receptors are expressed primarily on endothelial and hematopoietic progenitor cells and play critical roles in angiogenesis, vasculogenesis and hematopoiesis.

Synonyms:

TIE, Tie-1

Product images:

Western analysis of recombinant Human and Mouse sTIE-1 and sTIE-2 using a Polyclonal antibody directed against Mouse recombinant sTIE-1. There is a strong cross reactivity with Human sTIE-1 but only a weak one for Human and Mouse sTIE-2 visible.