

## Product datasheet for **AP31723PU-N**

### TLR9 (26-300) Rabbit Polyclonal Antibody

#### Product data:

Product Type:	Primary Antibodies
Applications:	IHC, WB
Recommended Dilution:	<b>Immunohistochemistry on Paraffin Sections:</b> 5 µg/ml. <b>Western Blot:</b> 1/500 - 1/3000.
Reactivity:	Bovine, Canine, Feline, Human, Monkey, Porcine
Host:	Rabbit
Isotype:	IgG
Clonality:	Polyclonal
Immunogen:	Recombinant protein fragment containing a sequence corresponding to a region within amino acids 26 and 300 of Human CD289(TLR9)
Specificity:	This antibody detects Toll-like Receptor 9 (TLR9) at aa 26-300.
Formulation:	0.1 M Tris-glycine, pH 7, 10% Glycerol and 0.01% Thimerosal State: Aff - Purified State: Liquid purified Ig fraction
Concentration:	lot specific
Purification:	Immunoaffinity Chromatography
Conjugation:	Unconjugated
Storage:	Store the antibody (in aliquots) at -20°C. Avoid repeated freezing and thawing.
Stability:	Shelf life: One year from despatch.
Gene Name:	toll like receptor 9
Database Link:	<a href="#">Entrez Gene 54106 Human Q9NR96</a>



[View online »](#)

**Background:**

TLR9 is a member of the Toll like receptor (TLR) family which plays a fundamental role in pathogen recognition and activation of innate immunity. TLRs are highly conserved from *Drosophila* to humans and share structural and functional similarities. They recognize pathogen associated molecular patterns (PAMPs) that are expressed on infectious agents, and mediate the production of cytokines necessary for the development of effective immunity. The various TLRs exhibit different patterns of expression. The gene encoding this protein is predominantly expressed in lung, placenta, and spleen, and lies in close proximity to another family member, TLR8, on chromosome X.

**Synonyms:**

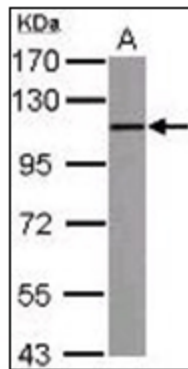
Toll-like receptor 9, UNQ5798/PRO19605

**Protein Families:**

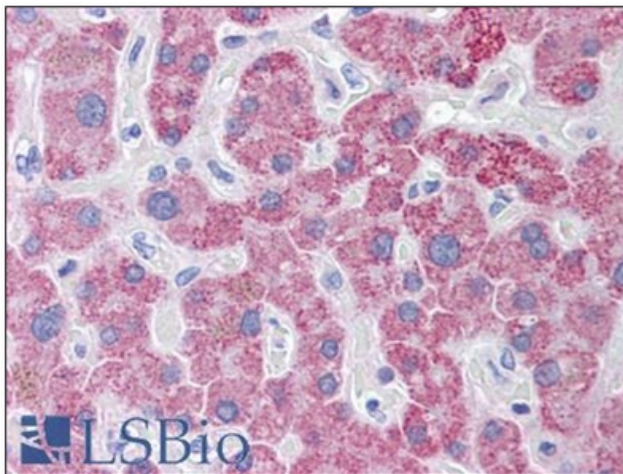
Druggable Genome, Transmembrane

**Protein Pathways:**

Toll-like receptor signaling pathway

**Product images:**


Sample (30 ug of whole cell lysate) A: THP-1. 7.5% SDS PAGE. TLR9 antibody diluted at 1/1000.



Human Liver: Formalin-Fixed, Paraffin-Embedded (FFPE)