

Product datasheet for **AP31719PU-N**

HLA-DQA2 Goat Polyclonal Antibody

Product data:

Product Type:	Primary Antibodies
Applications:	ELISA, IHC, WB
Recommended Dilution:	Peptide ELISA: Detection Limit: 1/16000. Western Blot: 0.1-0.3 µg/ml. Approx 26kDa band observed in Human Bone Marrow lysates. Immunohistochemistry on Paraffin Sections: 3.75µg/ml.
Reactivity:	Human
Host:	Goat
Clonality:	Polyclonal
Immunogen:	Peptide with sequence from the internal region of the protein sequence according to NP_064440.1.
Specificity:	Recognizes HLA-DQA2
Formulation:	Tris saline, pH~7.3 containing 0.02% Sodium Azide as preservative and 0.5% BSA as stabilizer State: Aff - Purified State: Liquid purified Ig fraction
Concentration:	lot specific
Purification:	Ammonium Sulphate Precipitation followed by Antigen Affinity Chromatography using the immunizing peptide
Conjugation:	Unconjugated
Storage:	Store the antibody undiluted at 2-8°C for one month or (in aliquots) at -20°C for longer. Avoid repeated freezing and thawing.
Stability:	Shelf life: one year from despatch.
Gene Name:	major histocompatibility complex, class II, DQ alpha 2
Database Link:	Entrez Gene 3118 Human P01906



[View online »](#)

Background:

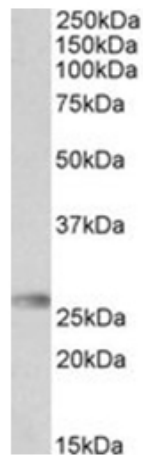
HLADQA1 belongs to the HLA class II alpha chain paralogues. The class II molecule is a heterodimer consisting of an alpha (DQA) and a beta chain (DQB), both anchored in the membrane. It plays a central role in the immune system by presenting peptides derived from extracellular proteins. Class II molecules are expressed in antigen presenting cells (APC: B Lymphocytes, dendritic cells, macrophages). HLADQA2 forms a heterodimer with a class II beta chain. It is located in intracellular vesicles and plays a central role in the peptide loading of MHC class II molecules by helping to release the CLIP molecule from the peptide binding site.

Synonyms:

HLA-DXA, DX alpha chain, HLA-DQA1, MHC class II DQA2

Note:

Calculated Molecular Weight: 28.0kDa (NP_064440.1)

Product images:

HLA-DQA2 antibody staining of Human Bone Marrow lysate at 0.3 ug/ml (35 ug protein in RIPA buffer). Primary incubation was 1 hour. Detected by chemiluminescence