

Product datasheet for **AP31717PU-N**

Macrophage Inflammatory Protein 3 alpha (CCL20) Goat Polyclonal Antibody

Product data:

Product Type:	Primary Antibodies
Applications:	ELISA, IHC
Recommended Dilution:	Peptide ELISA: 1/16000 (Detection Limit). Western Blot: Preliminary experiments in Human Peripheral Blood Mononucleocytes lysates gave no specific signal but low background (at antibody concentration up to 2µg/ml). Immunohistochemistry on Paraffin Sections: 6-8 µg/ml. In Paraffin Embedded Human Liver shows local staining between the hepatocytes.
Reactivity:	Bovine, Human, Porcine
Host:	Goat
Clonality:	Polyclonal
Immunogen:	Peptide with sequence from the internal region of Human CCL20 (NP_004582.1; NP_001123518.1). Percent identity by BLAST analysis: Human, Gorilla (100%); Gibbon, Monkey (92%).
Specificity:	This antibody is expected to recognize both isoforms (NP_004582.1 and NP_001123518.1).
Formulation:	Tris saline, pH~7.3 State: Aff - Purified State: Liquid purified Ig fraction Stabilizer: 0.5% BSA Preservative: 0.02% Sodium Azide
Concentration:	lot specific
Purification:	Ammonium Sulphate Precipitation followed by Antigen Affinity Chromatography using the immunizing peptide
Conjugation:	Unconjugated
Storage:	Store undiluted at 2-8°C for one month or (in aliquots) at -20°C for longer. Avoid repeated freezing and thawing.
Stability:	Shelf life: one year from despatch.
Gene Name:	C-C motif chemokine ligand 20
Database Link:	Entrez Gene 6364 Human P78556



[View online »](#)

Background:

MIP-3a (also known as C-C motif chemokine 20, small-inducible cytokine A20, macrophage inflammatory protein 3 alpha, MIP-3-alpha, liver and activation-regulated chemokine, CC chemokine LARC and beta chemokine exodus-1) is a chemotactic factor that attracts lymphocytes and, slightly, neutrophils, but not monocytes. MIP-3a inhibits proliferation of myeloid progenitors in colony formation assays and may be involved in formation and function of the mucosal lymphoid tissues by attracting lymphocytes and dendritic cells towards epithelial cells. C-terminal processed forms have been shown to be equally chemotactically active for leukocytes. MIP-3a also possesses antibacterial activity against E.coli and S.aureus. MIP-3a is a secreted protein that is expressed predominantly in the liver, lymph nodes, appendix, peripheral blood lymphocytes, and fetal lung. Low levels of expression are also seen in thymus, prostate, testis, small intestine and colon. C-terminal processed forms which lack 1, 3 or 6 amino acids are produced by proteolytic cleavage after secretion from peripheral blood monocytes.

Synonyms:

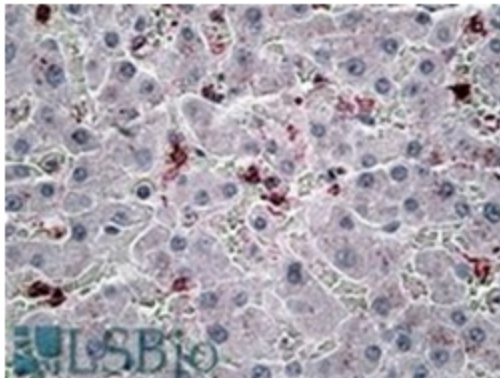
CCL20, LARC, MIP3A, MIP-3 alpha, C-C motif chemokine 20, Small-inducible cytokine A20, SCYA20, Exodus-1, Dendritic Cell Marker, DC marker

Protein Families:

Druggable Genome, Secreted Protein

Protein Pathways:

Chemokine signaling pathway, Cytokine-cytokine receptor interaction

Product images:

CCL20 antibody staining of paraffin embedded Human Liver at 6 ug/ml. Steamed antigen retrieval with citrate buffer pH 6, AP-staining.