

## Product datasheet for **AP31715PU-N**

### Desmoglein 1 (DSG1) Goat Polyclonal Antibody

#### Product data:

Product Type:	Primary Antibodies
Applications:	ELISA, IHC
Recommended Dilution:	<b>Peptide ELISA:</b> Detection Limit: 1/32000. <b>Western Blot:</b> Preliminary experiments in lysates of cell lines A431, HeLa, K562 and MOLT4 gave no specific signal but low background (at antibody concentration up to 1 µg/ml). We would appreciate any feedback from people in the field - have any results been reported with other antibodies/lysates? <b>Immunohistochemistry on Paraffin Sections:</b> 4-6 µg/ml. In Paraffin Embedded Human Skin shows staining of the cellular membranes of keratinocytes.
Reactivity:	Human
Host:	Goat
Clonality:	Polyclonal
Immunogen:	Peptide with sequence from the internal region of the protein sequence according to NP_001933.2.
Specificity:	Recognizes Desmoglein 1 / DSG1
Formulation:	Tris saline, pH~7.3 containing 0.02% Sodium Azide as preservative and 0.5% BSA as stabilizer State: Aff - Purified State: Liquid purified Ig fraction
Concentration:	lot specific
Purification:	Ammonium Sulphate Precipitation followed by Antigen Affinity Chromatography using the immunizing peptide
Conjugation:	Unconjugated
Storage:	Store the antibody undiluted at 2-8°C for one month or (in aliquots) at -20°C for longer. Avoid repeated freezing and thawing.
Stability:	Shelf life: one year from despatch.
Gene Name:	desmoglein 1
Database Link:	<a href="#">Entrez Gene 1828 Human Q02413</a>



[View online »](#)

**Background:**

Desmosomes are cell-cell junctions between epithelial, myocardial and certain other cell types. Desmoglein 1 is a calcium-binding transmembrane glycoprotein component of desmosomes in vertebrate epithelial cells. Currently, three desmoglein subfamily members have been identified and all are members of the cadherin cell adhesion molecule superfamily. These desmoglein gene family members are located in a cluster on chromosome 18. Desmoglein 1 has been identified as the autoantigen of the autoimmune skin blistering disease pemphigus foliaceus.

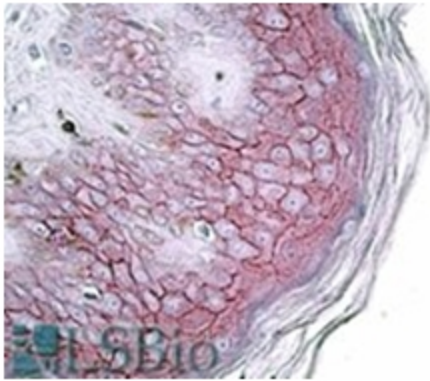
Desmoglein 1 is a 165kD glycoprotein that is a core component of the desmosome cell-cell junction between epithelial cells. Desmoglein 1 is synthesized in the suprabasal layer of the skin, and is vital to epidermal integrity.

**Synonyms:**

Desmosomal glycoprotein 1, Pemphigus foliaceus antigen, DSG1, CDHF4, DG1, DGI

**Protein Families:**

Druggable Genome

**Product images:**

DSG1 antibody staining of paraffin embedded Human skin at 3.8 ug/ml. Steamed antigen retrieval with citrate buffer pH 6, AP-staining.