

## Product datasheet for **AP31683PU-N**

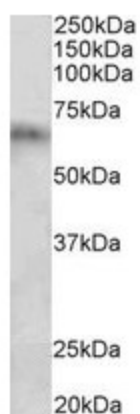
### Cyp2d5 Goat Polyclonal Antibody

#### Product data:

Product Type:	Primary Antibodies
Applications:	ELISA, WB
Recommended Dilution:	<b>Peptide ELISA:</b> 1/32000. <b>Western blot:</b> Approx 65kDa band observed in Rat Spleen lysates (calculated MW of 57.1kDa according to NP_775426.1). <u>Recommended concentration:</u> 1 - 3 µg/ml.
Reactivity:	Rat
Host:	Goat
Clonality:	Polyclonal
Immunogen:	Peptide with sequence CDAFTAQNGRSINPK, from the internal region of the protein sequence according to NP_775426.1.
Specificity:	This antibody reacts to Cytochrome P450 2D10.
Formulation:	Tris saline, pH7.3 containing 0.02% sodium azide as preservative and 0.5% bovine serum albumin as stabilizer State: Aff - Purified State: Liquid purified Ig fraction
Concentration:	lot specific
Conjugation:	Unconjugated
Storage:	Store the antibody undiluted at 2-8°C for one month or (in aliquots) at -20°C for longer. Avoid repeated freezing and thawing.
Stability:	Shelf life: one year from despatch.
Gene Name:	cytochrome P450, family 2, subfamily d, polypeptide 5
Database Link:	<u><a href="#">Entrez Gene 286963 Rat P12939</a></u>
Synonyms:	CYPIID10, Cyp2d10, Cyp2d-10, Cyp2d5, Cytochrome P450-CMF1B, Cytochrome P450-DB5



[View online »](#)

**Product images:**

(2ug/ml) staining of Rat Spleen lysate (35ug protein in RIPA buffer). Primary incubation was 1 hour. Detected by chemiluminescence.