

Product datasheet for **AP31671PU-N**

Glycophorin A (GYPA) Rabbit Polyclonal Antibody

Product data:

Product Type:	Primary Antibodies
Applications:	ELISA, FC, WB
Recommended Dilution:	Flow Cytometry. Western Blot. ELISA.
Reactivity:	Human
Host:	Rabbit
Isotype:	IgG
Clonality:	Polyclonal
Immunogen:	Human Glycophorin A transmembrane protein <u>Donor:</u> Rabbit serum
Specificity:	Anti-human Glycophorin A (GpA) Polyclonal Antibody targets the human Glycophorin A protein. This polyclonal antibody recognizes various epitopes on the GpA protein. The 23 residue hydrophobic transmembrane domain has been shown to mediate non-covalent dimerization of the protein under conditions of SDS page (and in other detergents). We also sell a FITC conjugated version of this antibody (AP31671FC-N).
Formulation:	PBS containing 0.02% sodium azide (NaN ₃) as preservative State: Purified State: Liquid purified Ig fraction
Concentration:	lot specific
Purification:	Affinity chromatography on Protein G
Conjugation:	Unconjugated
Storage:	Store the antibody undiluted at 2-8°C for one month or (in aliquots) at -20°C for longer. Avoid repeated freezing and thawing.
Stability:	Shelf life: one year from despatch.
Gene Name:	glycophorin A (MNS blood group)
Database Link:	<u>Entrez Gene 2993 Human P02724</u>



[View online »](#)

Background:

This 131 amino acid, 36 kDa, transmembrane sialoglycoprotein spans the membrane of erythrocytes once. GpA presents its N terminus at the extracellular surface of the human red blood cell, has a single transmembrane domain and an internal cytoplasmic C terminus. GpA contributes to the expression of blood group antigen M and N specificities, which work to prevent red blood cell aggregation in circulation.

Studies show that GpA is expressed early on the cell surface during erythropoiesis as pluripotent stem cells are recruited to differentiate into erythrocytes. This makes GpA a useful marker for studying the developmental biology of hematopoietic progenitor cells.

Synonyms:

Glycophorin-A, GPA, PAS-2, Sialoglycoprotein alpha, MN sialoglycoprotein

Protein Families:

ES Cell Differentiation/IPS, Transmembrane

Protein Pathways:

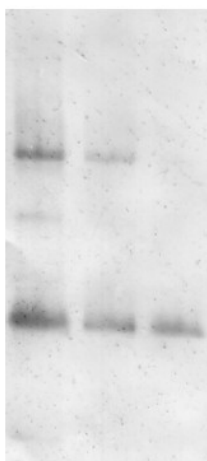
Hematopoietic cell lineage

Product images:

GPA/GPA

GPA/GPB

GPA



Western blot analysis using (Purified Anti-Glycophorin A pAb) at a dilution of 1/100 on human RBCs at various concentrations (GPA = Glycophorin A, GPB = Glycophorin B).