

## Product datasheet for **AP31627PU-N**

### Cathepsin V (CTSV) Rabbit Polyclonal Antibody

#### Product data:

Product Type:	Primary Antibodies
Applications:	ELISA, IHC, WB
Recommended Dilution:	<b>ELISA:</b> 1/20000. <b>Immunohistochemistry on Paraffin Sections:</b> 1/200. <b>Western Blot:</b> 1/500 - 1/1000.
Reactivity:	Human
Host:	Rabbit
Isotype:	IgG
Clonality:	Polyclonal
Immunogen:	Synthetic peptide from human CATL2.
Specificity:	This antibody detects endogenous levels of of fragment of activated CATL2 resulting from cleavage adjacent to Leu114.
Formulation:	PBS (without Mg <sup>2+</sup> , Ca <sup>2+</sup> ), pH 7.4, 150 mM Sodium Chloride, 0.02% Sodium Azide and 50% Glycerol State: Purified State: Liquid purified Ig fraction
Concentration:	lot specific
Purification:	Immunoaffinity Chromatography
Conjugation:	Unconjugated
Storage:	Store the antibody (in aliquots) at -20°C or lower. Avoid freeze-thaw cycles.
Stability:	Shelf life: one year from despatch.
Gene Name:	cathepsin V
Database Link:	<a href="#">Entrez Gene 1515 Human O60911</a>



[View online »](#)

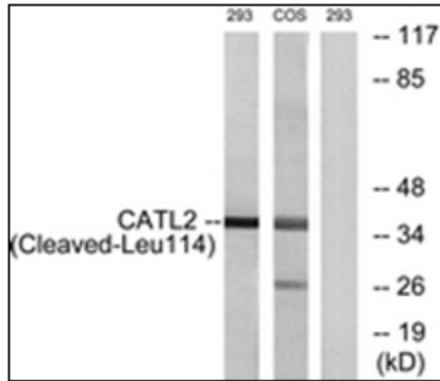
**Background:** Cathepsin V, also known as Cathepsin L2 and Cathepsin U, is a cysteine protease of the papain family. It is expressed as a proenzyme in lysosomes, which can be autocatalytically converted to the mature form at pH 4.0. Cathepsin V is specifically expressed in the thymus, testis, and corneal epithelium.

**Synonyms:** Cathepsin V, Cathepsin U, CTSL2, CATL2, CTSU, CTSV

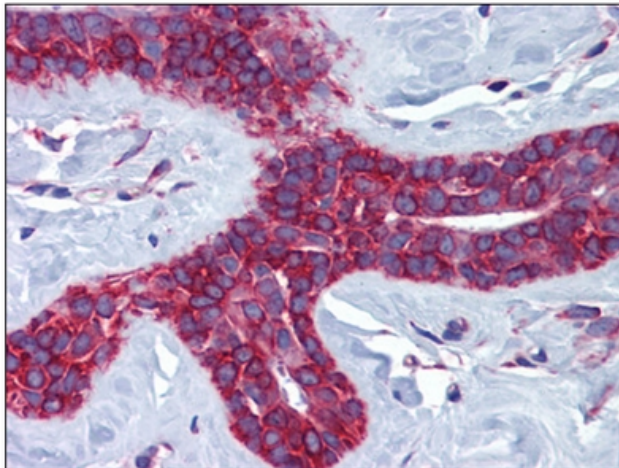
**Protein Families:** Druggable Genome, Protease

**Protein Pathways:** Lysosome

**Product images:**



Western blot analysis of extracts from 293/COS cells, treated with etoposide 25uM 1h, using CATL2 (Cleaved-Leu114) Antibody. The lane on the right is treated with the synthesized peptide.



Human Breast: Formalin-Fixed, Paraffin-Embedded (FFPE)