

Product datasheet for **AP31625PU-N**

HIST4H4 (acetyl K5) Rabbit Polyclonal Antibody

Product data:

Product Type:	Primary Antibodies
Applications:	ELISA, IF, IHC, WB
Recommended Dilution:	ELISA: 1/1000. Immunofluorescence: 1/100 - 1/500. Immunohistochemistry on Paraffin Sections: 1/200. Western Blot: 1/500 - 1/1000.
Reactivity:	Human, Mouse, Rat
Host:	Rabbit
Isotype:	IgG
Clonality:	Polyclonal
Immunogen:	Synthetic peptide from Human Histone H4 around the acetylated site of Lys5.
Specificity:	This antibody detects endogenous levels of total Histone H4 protein only when acetylated at Lysine5.
Formulation:	PBS (without Mg ²⁺ , Ca ²⁺), pH 7.4 containing 150 mM Sodium Chloride, 0.02% Sodium Azide and 50% Glycerol State: Purified State: Liquid purified Ig fraction
Concentration:	lot specific
Purification:	Immunoaffinity Chromatography
Conjugation:	Unconjugated
Storage:	Store the antibody (in aliquots) at -20°C. Avoid repeated freezing and thawing.
Stability:	Shelf life: one year from despatch.
Gene Name:	histone cluster 4, H4
Database Link:	Entrez Gene 554313 Human Entrez Gene 121504 Human P62805



[View online »](#)

Background:

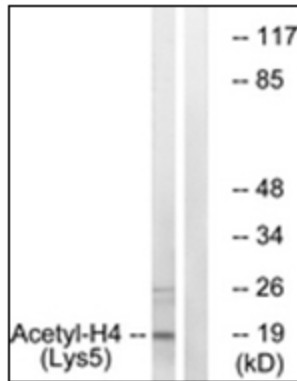
Histone proteins H3, H4, H2A, and H2B function as building blocks to package eukaryotic DNA into repeating nucleosome units that are folded in higher order chromatin fibers. The nucleosome is composed of an octamer containing a H3/H4 tetramer and two H2A/H2B dimers, surrounded by approximately 146 base pairs of DNA. A diverse and elaborate array of post-translational modifications including acetylation, phosphorylation, methylation, ubiquitination, and ADP-ribosylation occurs on the N-terminal tail domains of histones.

Synonyms:

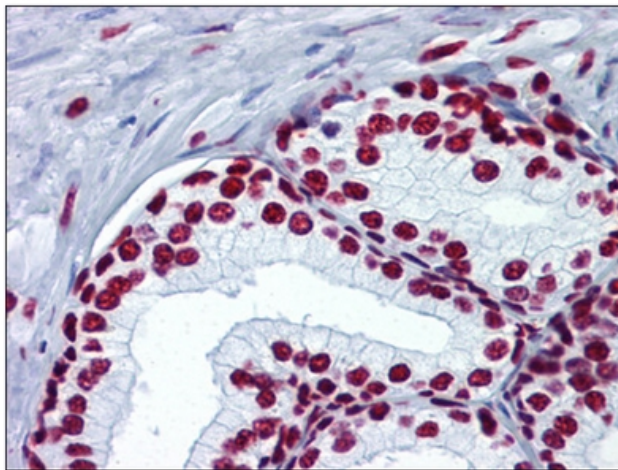
HIST1H4, H4/A, H4FA

Protein Pathways:

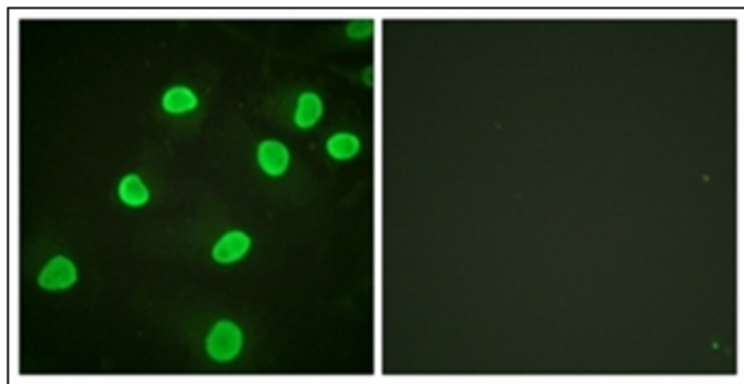
Systemic lupus erythematosus

Product images:


Western blot analysis of extracts from COS7 cells, treated with TSA 400nM 24h, using Histone H4 (Acetyl-Lys5) Antibody. The lane on the right is treated with the synthesized peptide.



Human Prostate: Formalin-Fixed, Paraffin-Embedded (FFPE)



Immunofluorescence analysis of HeLa cells, using Histone H4 (Acetyl-Lys5) Antibody. The picture on the right is treated with the synthesized peptide.