

Product datasheet for **AP31624PU-N**

MUC13 (C-term) Rabbit Polyclonal Antibody

Product data:

Product Type:	Primary Antibodies
Applications:	ELISA, IF, IHC, WB
Recommended Dilution:	ELISA: 1/5000. Immunofluorescence: 1/100 - 1/500. Immunohistochemistry on Paraffin Sections: 1/200. Western Blot: 1/500 - 1/1000.
Reactivity:	Human
Host:	Rabbit
Isotype:	IgG
Clonality:	Polyclonal
Immunogen:	Synthetic peptide from C-terminus of Human MUC13.
Specificity:	This antibody detects endogenous levels of total MUC13 protein.
Formulation:	PBS (without Mg ²⁺ , Ca ²⁺), pH 7.4, 150 mM Sodium Chloride, 0.02% Sodium Azide and 50% Glycerol State: Purified State: Liquid purified Ig fraction
Concentration:	lot specific
Purification:	Immunoaffinity Chromatography
Conjugation:	Unconjugated
Storage:	Store the antibody (in aliquots) at -20°C or lower. Avoid freeze-thaw cycles.
Stability:	Shelf life: one year from despatch.
Gene Name:	mucin 13, cell surface associated
Database Link:	Entrez Gene 56667 Human Q9H3R2



[View online »](#)

Background:

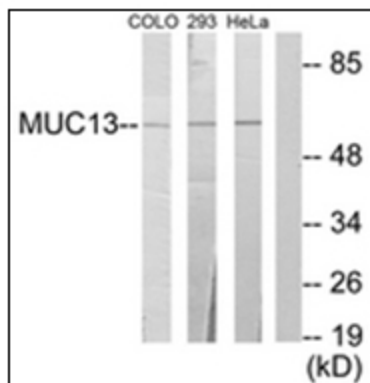
Mucin 13 (MUC13) is a member of the epithelial mucin family of secreted and cell-surface glycoproteins expressed by ductal and glandular epithelial tissues. These transmembrane mucins are involved in barrier functions in epithelial tissues. Biochemical studies have shown that Mucin 13 is cleaved into two subunits and that the subunit containing the cytoplasmic tail undergoes homodimerization.

Synonyms:

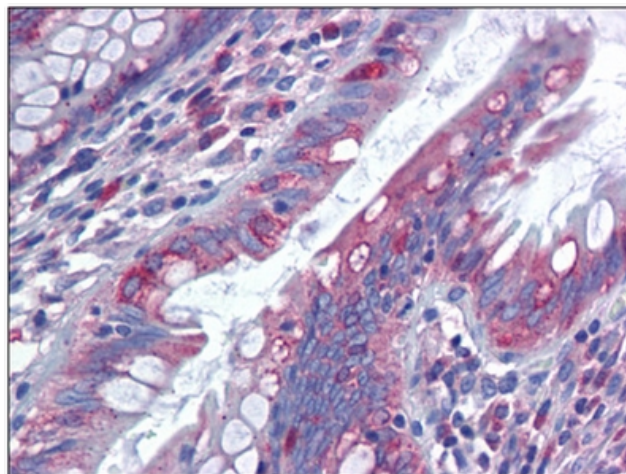
MUC-13, MUC13, DRCC1, RECC, UNQ6194/PRO20221

Protein Families:

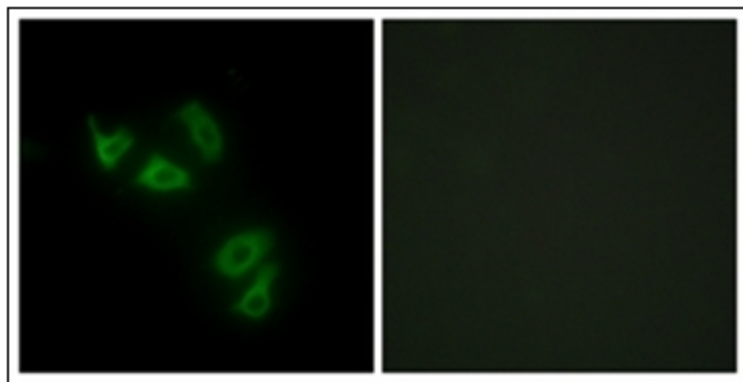
Transmembrane

Product images:


Western blot analysis of extracts from 293/HeLa/COLO205 cells, using MUC13 Antibody. The lane on the right is treated with the synthesized peptide.



Human Colon: Formalin-Fixed, Paraffin-Embedded (FFPE)



Immunofluorescence analysis of HepG2 cells, using MUC13 Antibody. The picture on the right is treated with the synthesized peptide.