

Product datasheet for **AP31622PU-N**

EP2 (PTGER2) (C-term) Rabbit Polyclonal Antibody

Product data:

Product Type:	Primary Antibodies
Applications:	ELISA, IHC, WB
Recommended Dilution:	ELISA: 1/1000. Immunohistochemistry on Paraffin Sections: 1/200. Western Blot: 1/500 - 1/1000.
Reactivity:	Human, Mouse, Rat
Host:	Rabbit
Isotype:	IgG
Clonality:	Polyclonal
Immunogen:	Synthetic peptide from Human PE2R2. Epitope: aa261-310
Specificity:	This antibody detects endogenous levels of total PE2R2 protein.
Formulation:	PBS (without Mg ²⁺ , Ca ²⁺), pH 7.4, 150 mM Sodium Chloride, 0.02% Sodium Azide and 50% Glycerol State: Purified State: Liquid purified Ig fraction
Concentration:	lot specific
Purification:	Immunoaffinity Chromatography
Conjugation:	Unconjugated
Storage:	Upon receipt, store undiluted (in aliquots) at -20°C. Avoid repeated freezing and thawing.
Stability:	Shelf life: one year from despatch.
Gene Name:	prostaglandin E receptor 2
Database Link:	Entrez Gene 19217 Mouse Entrez Gene 81752 Rat Entrez Gene 5732 Human P43116



[View online »](#)

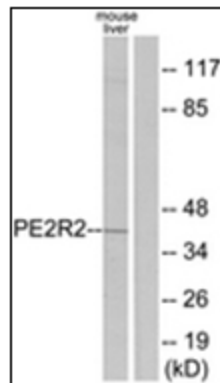
Background: Prostaglandin E Receptor EP2 is a member of the Prostanoid Receptor subfamily. Along with several other receptor subtypes (EP1, EP3, and EP4), it mediates the diverse biological effects of Prostaglandin E2 (PGE2). PGE2 has been implicated in numerous processes, including immune response modulation, male erectile function, induction of labor, cervical cancer, control of blood pressure, asthma, and more recently, Alzheimer's Disease.

Synonyms: Prostaglandin E receptor 2, Prostanoid EP2 receptor, Prostaglandin E2 receptor EP2, PGE receptor EP2, PGE2 receptor EP2 subtype, EP2

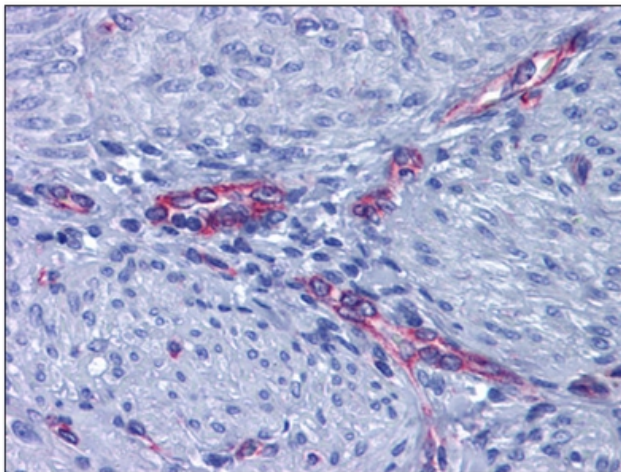
Protein Families: Druggable Genome, GPCR, Transmembrane

Protein Pathways: Neuroactive ligand-receptor interaction

Product images:



Western blot analysis of extracts from mouse liver cells, using PE2R2 Antibody. The lane on the right is treated with the synthesized peptide.



Human Uterus, Myometrium: Formalin-Fixed, Paraffin-Embedded (FFPE)