

Product datasheet for **AP31619PU-N**

CDw75 (ST6GAL1) Rabbit Polyclonal Antibody

Product data:

| | |
|-----------------------|--|
| Product Type: | Primary Antibodies |
| Applications: | ELISA, IHC, WB |
| Recommended Dilution: | ELISA: 1/40000. Immunohistochemistry on Paraffin Sections: 1/200. Western Blot: 1/500 - 1/1000. |
| Reactivity: | Human, Mouse, Rat |
| Host: | Rabbit |
| Isotype: | IgG |
| Clonality: | Polyclonal |
| Immunogen: | Synthetic peptide corresponding to the Internal region of Human ST6GAL1. |
| Specificity: | This antibody detects endogenous levels of total ST6GAL1 protein. |
| Formulation: | PBS (without Mg ²⁺ , Ca ²⁺), pH 7.4, 150 mM Sodium Chloride, 0.02% Sodium Azide and 50% Glycerol State: Purified State: Liquid purified Ig fraction |
| Concentration: | lot specific |
| Purification: | Immunoaffinity Chromatography |
| Conjugation: | Unconjugated |
| Storage: | Store the antibody (in aliquots) at -20°C or lower. Avoid freeze-thaw cycles. |
| Stability: | Shelf life: one year from despatch. |
| Gene Name: | ST6 beta-galactoside alpha-2,6-sialyltransferase 1 |
| Database Link: | Entrez Gene 20440 Mouse Entrez Gene 25197 Rat Entrez Gene 6480 Human P15907 |



[View online »](#)

Background:

The protein encoded by this gene is a type II membrane protein that catalyzes the transfer of sialic acid from CMP-sialic acid to galactose-containing substrates. The encoded protein, which is normally found in the Golgi but which can be proteolytically processed to a soluble form, is involved in the generation of the cell-surface carbohydrate determinants and differentiation antigens HB-6, CDw75, and CD76. This protein is a member of glycosyltransferase family 29. Three transcript variants encoding two different isoforms have been found for this gene.

Synonyms:

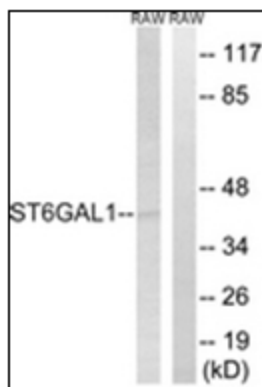
SIAT1, B-Cell marker

Protein Families:

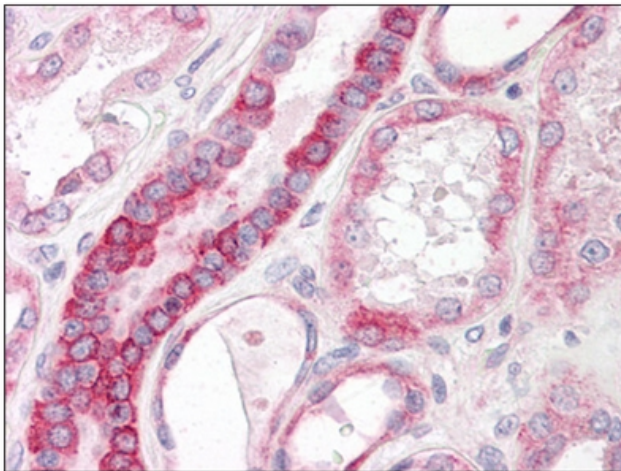
Secreted Protein

Protein Pathways:

Metabolic pathways, N-Glycan biosynthesis

Product images:

Western blot analysis of extracts from RAW264.7 cells, using ST6GAL1 Antibody. The lane on the right is treated with the synthesized peptide.



Human Kidney: Formalin-Fixed, Paraffin-Embedded (FFPE)