

Product datasheet for **AP31618SU-N**

GH1 Rabbit Polyclonal Antibody

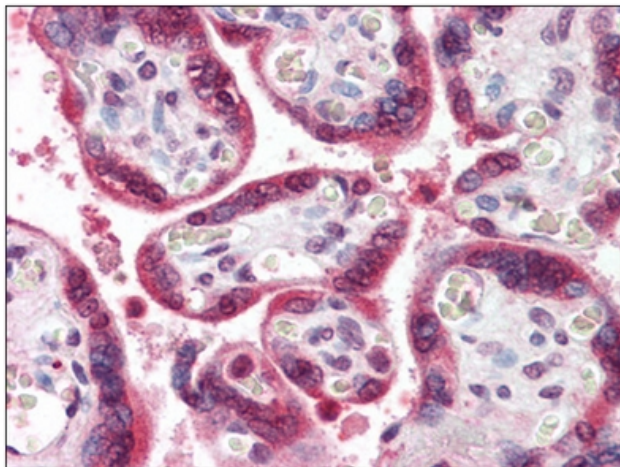
Product data:

Product Type:	Primary Antibodies
Applications:	ELISA, IHC
Recommended Dilution:	ELISA. Immunohistochemistry on Paraffin Sections: 1/100.
Reactivity:	Bovine, Human
Host:	Rabbit
Isotype:	IgG
Clonality:	Polyclonal
Immunogen:	Purified Bovine Growth Hormone protein.
Specificity:	Recognizes Bovine Growth Hormone (BGH): 100%.
Formulation:	State: Serum State: Antiserum
Conjugation:	Unconjugated
Storage:	Store the antibody undiluted at 2-8°C for one month or (in aliquots) at -20°C for longer. Avoid freeze-thaw cycles.
Stability:	Shelf life: one year from despatch.
Database Link:	Entrez Gene 280804 Bovine P01246
Background:	The protein encoded by this gene is a member of the somatotropin/prolactin family of hormones which play an important role in growth control. The gene, along with four other related genes, is located at the growth hormone locus on chromosome 17 where they are interspersed in the same transcriptional orientation; an arrangement which is thought to have evolved by a series of gene duplications. The five genes share a remarkably high degree of sequence identity. Alternative splicing generates additional isoforms of each of the five growth hormones, leading to further diversity and potential for specialization. Mutations in or deletions of the gene lead to growth hormone deficiency and short stature.
Synonyms:	Pituitary growth hormone, Growth hormone 1, HGH



[View online »](#)

Product images:



Human Placenta: Formalin-Fixed, Paraffin-Embedded (FFPE)