

Product datasheet for **AP31616PU-N**

E Cadherin (CDH1) (N-term) Rabbit Polyclonal Antibody

Product data:

Product Type:	Primary Antibodies
Applications:	ELISA, IF, IHC, WB
Recommended Dilution:	ELISA: 1/40000. Immunofluorescence: 1/100 - 1/500. Immunohistochemistry on Paraffin Sections: 1/200. Western Blot: 1/500 - 1/1000.
Reactivity:	Human
Host:	Rabbit
Isotype:	IgG
Clonality:	Polyclonal
Immunogen:	Synthetic peptide from Human E-cadherin.
Specificity:	This antibody detects endogenous levels of total E-Cadherin protein.
Formulation:	PBS (without Mg ²⁺ , Ca ²⁺), pH 7.4, 150 mM Sodium Chloride, 0.02% Sodium Azide and 50% Glycerol State: Purified State: Liquid purified Ig fraction
Concentration:	lot specific
Purification:	Immunoaffinity Chromatography
Conjugation:	Unconjugated
Storage:	Store the antibody (in aliquots) at -20°C or lower. Avoid freeze-thaw cycles.
Stability:	Shelf life: one year from despatch.
Gene Name:	cadherin 1
Database Link:	Entrez Gene 999 Human P12830



[View online »](#)

Background:

E Cadherin (CDH1) is a classical cadherin from the cadherin superfamily. It is a calcium dependent cell-cell adhesion glycoprotein composed of five extracellular cadherin repeats, a transmembrane region and a highly conserved cytoplasmic tail. Mutations in this gene are correlated with gastric, breast, colorectal, thyroid and ovarian cancer. Loss of function is thought to contribute to progression in cancer by increasing proliferation, invasion, and/or metastasis. The ectodomain of this protein mediates bacterial adhesion to mammalian cells and the cytoplasmic domain is required for internalization. Identified transcript variants arise from mutation at consensus splice sites.

Synonyms:

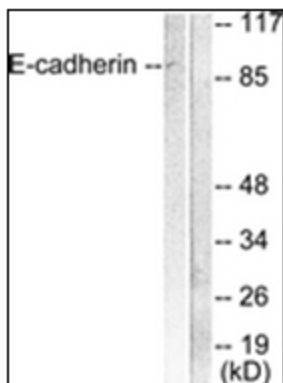
Epithelial cadherin, E-cadherin, Uvomorulin, CAM 120/80, CDH1, CDHE, UVO

Protein Families:

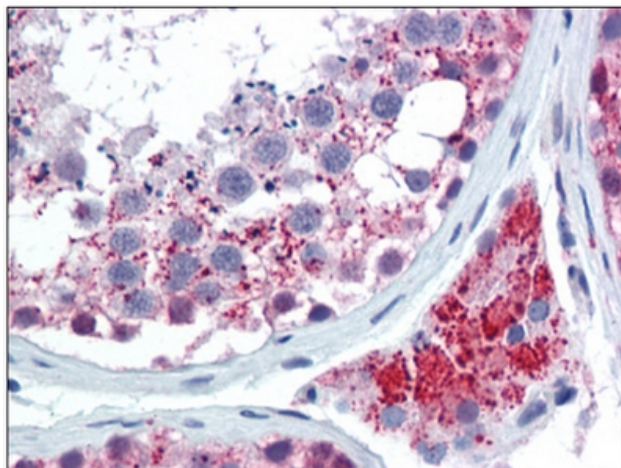
Druggable Genome, ES Cell Differentiation/IPS, Transmembrane

Protein Pathways:

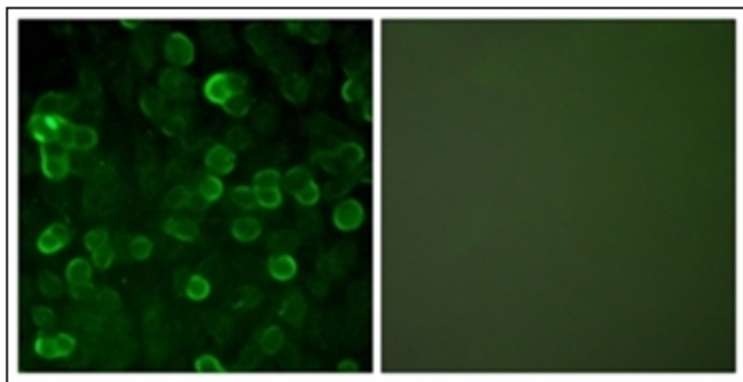
Adherens junction, Bladder cancer, Cell adhesion molecules (CAMs), Endometrial cancer, Melanoma, Pathogenic Escherichia coli infection, Pathways in cancer, Thyroid cancer

Product images:

Western blot analysis of extracts from 293 cells, using E-cadherin Antibody. The lane on the right is treated with the synthesized peptide.



Human Testis: Formalin-Fixed, Paraffin-Embedded (FFPE)



Immunofluorescence analysis of A549 cells, using E-cadherin Antibody. The picture on the right is treated with the synthesized peptide.