

Product datasheet for **AP31612PU-N**

MARK4 Rabbit Polyclonal Antibody

Product data:

Product Type:	Primary Antibodies
Applications:	ELISA, IF, IHC
Recommended Dilution:	ELISA: 1/40000. Immunofluorescence: 1/100 - 1/500. Immunohistochemistry on Paraffin Sections: 1/100.
Reactivity:	Human, Mouse
Host:	Rabbit
Isotype:	IgG
Clonality:	Polyclonal
Immunogen:	Synthetic peptide
Specificity:	This antibody detects endogenous levels of total MARK4 protein.
Formulation:	PBS (without Mg ²⁺ , Ca ²⁺), pH 7.4, 150 mM Sodium Chloride, 0.02% Sodium Azide and 50% Glycerol State: Purified State: Liquid purified Ig fraction
Concentration:	lot specific
Purification:	Immunoaffinity Chromatography
Conjugation:	Unconjugated
Storage:	Store the antibody (in aliquots) at -20°C. Avoid freeze-thaw cycles.
Stability:	Shelf life: one year from despatch.
Gene Name:	microtubule affinity regulating kinase 4
Database Link:	Entrez Gene 232944 Mouse Entrez Gene 57787 Human Q96L34
Background:	MARKL1, a MARK type protein kinase, contains a N-terminal serine/threonine kinase domain, a central ubiquitin-associated domain and a C-terminal KA1-associated kinase domain. A smaller mRNA transcript, lacking exon 16 containing the KA1-associated kinase domain, also has been reported.

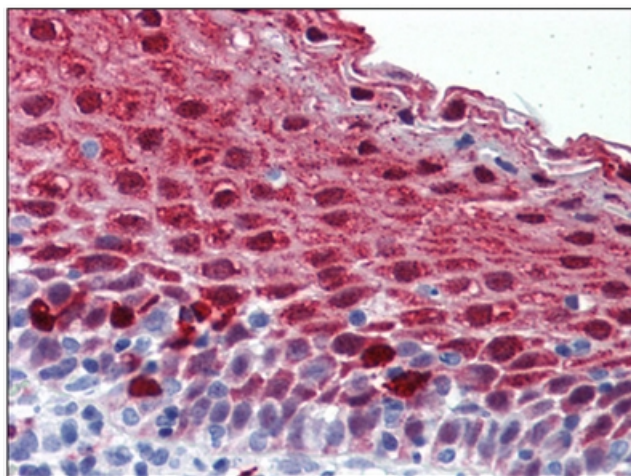


[View online »](#)

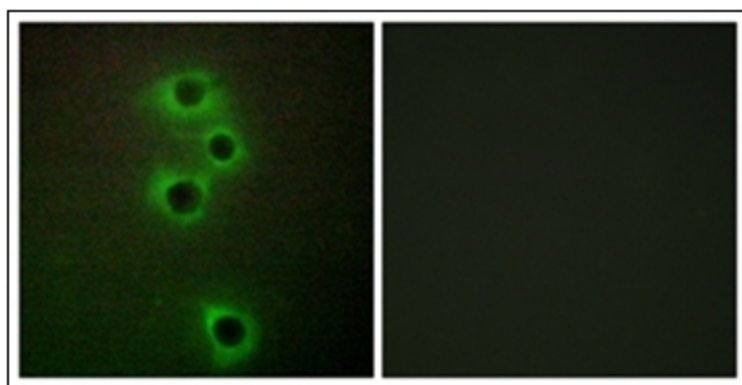
Synonyms: MAP microtubule affinity-regulating kinase 4, MARKL1

Protein Families: Druggable Genome, Protein Kinase

Product images:



Human Tonsil: Formalin-Fixed, Paraffin-Embedded (FFPE)



Immunofluorescence analysis of A549 cells, using MARK4 Antibody. The picture on the right is treated with the synthesized peptide.