

Product datasheet for **AP31608PU-N**

PGP9.5 (UCHL1) (C-term) Rabbit Polyclonal Antibody

Product data:

Product Type:	Primary Antibodies
Applications:	ELISA, IHC, WB
Recommended Dilution:	ELISA: 1/5000. Immunohistochemistry on Paraffin Sections: 1/200. Western Blot: 1/500 - 1/1000.
Reactivity:	Human, Mouse, Rat
Host:	Rabbit
Isotype:	IgG
Clonality:	Polyclonal
Immunogen:	Synthetic peptide - KLH conjugated
Specificity:	This antibody detects endogenous levels of total PGP9.5 protein.
Formulation:	PBS (without Mg ²⁺ , Ca ²⁺), pH 7.4, 150 mM Sodium Chloride, 0.02% Sodium Azide and 50% Glycerol State: Purified State: Liquid purified Ig fraction
Concentration:	lot specific
Purification:	Immunoaffinity Chromatography
Conjugation:	Unconjugated
Storage:	Store the antibody (in aliquots) at -20°C. Avoid freeze-thaw cycles.
Stability:	Shelf life: one year from despatch.
Gene Name:	ubiquitin C-terminal hydrolase L1
Database Link:	Entrez Gene 22223 Mouse Entrez Gene 29545 Rat Entrez Gene 7345 Human P09936



[View online »](#)

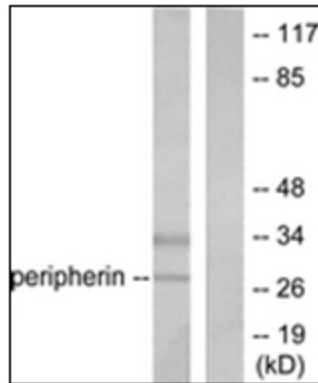
Background: UCHL1 is a member of family of proteins that hydrolyze small C-terminal adducts of ubiquitin to generate the ubiquitin monomer. The expression of UCHL1 is highly specific to neurons and to cell of the diffuse neuroendocrine system and their tumors. UCHL1 exhibits both and hydrolase and a ligase activity. The S18Y variant of UCHL1, that has reduced ligase activity, has been linked to susceptibility for Parkinson's disease.

Synonyms: UCH-L1, PGP 9.5, Ubiquitin thioesterase L1, Neuron cytoplasmic protein 9.5

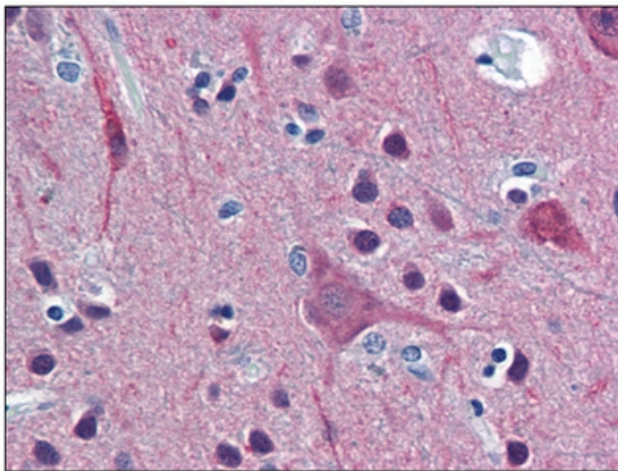
Protein Families: Druggable Genome, Protease

Protein Pathways: Parkinson's disease

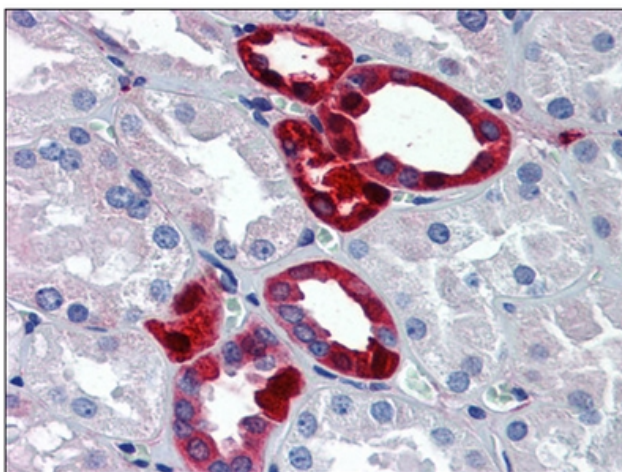
Product images:



Western blot analysis of extracts from 293 cells, using PGP9.5 Antibody. The lane on the right is treated with the synthesized peptide.



Human Brain, Cortex: Formalin-Fixed, Paraffin-Embedded (FFPE)



Human Kidney: Formalin-Fixed, Paraffin-Embedded (FFPE)