

Product datasheet for **AP31607PU-N**

Cytokeratin 19 (KRT19) Rabbit Polyclonal Antibody

Product data:

Product Type:	Primary Antibodies
Applications:	ELISA, IHC, WB
Recommended Dilution:	ELISA: 1/10000. Immunohistochemistry on Paraffin Sections: 1/200. Western Blot: 1/500 - 1/1000.
Reactivity:	Human, Mouse, Rat
Host:	Rabbit
Isotype:	IgG
Clonality:	Polyclonal
Immunogen:	Synthetic peptide
Specificity:	This antibody detects endogenous levels of total Keratin 19 protein.
Formulation:	PBS (without Mg ²⁺ , Ca ²⁺), pH 7.4, 150 mM Sodium Chloride and 50% Glycerol State: Purified State: Liquid purified Ig fraction Preservative: 0.02% Sodium Azide
Concentration:	lot specific
Purification:	Immunoaffinity Chromatography
Conjugation:	Unconjugated
Storage:	Store the antibody (in aliquots) at -20°C. Avoid freeze-thaw cycles.
Stability:	Shelf life: one year from despatch.
Gene Name:	keratin 19
Database Link:	<u>Entrez Gene 16669 Mouse</u> <u>Entrez Gene 360626 Rat</u> <u>Entrez Gene 3880 Human P08727</u>



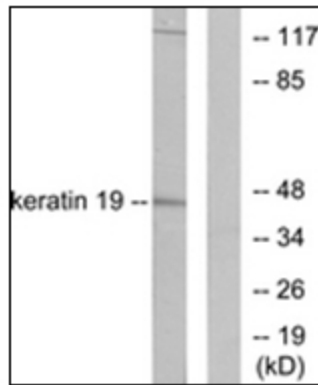
[View online »](#)

Background:

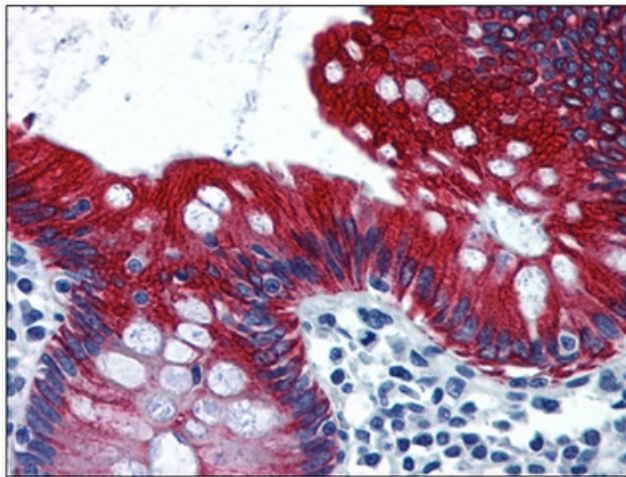
Cytokeratin 19 is a member of the keratin family. The keratins are intermediate filament proteins responsible for the structural integrity of epithelial cells and are subdivided into cytokeratins and hair keratins. The type I cytokeratins consist of acidic proteins which are arranged in pairs of heterotypic keratin chains. Unlike its related family members, this smallest known acidic cytokeratin is not paired with a basic cytokeratin in epithelial cells. KRT19 is specifically expressed in the periderm, the transiently superficial layer that envelopes the developing epidermis. The type I cytokeratins are clustered in a region of chromosome 17q12-q21.

Synonyms:

Cytokeratin-19, Keratin-19, KRT19, CK19, K19

Product images:


Western blot analysis of extracts from LOVO cells, using Keratin 19 Antibody. The lane on the right is treated with the synthesized peptide.



Human Colon: Formalin-Fixed, Paraffin-Embedded (FFPE)