

Product datasheet for **AP31606PU-N**

FGFR2 Rabbit Polyclonal Antibody

Product data:

Product Type:	Primary Antibodies
Applications:	ELISA, IHC, WB
Recommended Dilution:	ELISA: 1/10000. Immunohistochemistry on Paraffin Sections: 1/200. Western Blot: 1/500 - 1/1000.
Reactivity:	Human, Mouse
Host:	Rabbit
Isotype:	IgG
Clonality:	Polyclonal
Immunogen:	Synthetic peptide - KLH conjugated
Specificity:	This antibody detects endogenous levels of total FGFR2 protein.
Formulation:	PBS (without Mg ²⁺ , Ca ²⁺), pH 7.4, 150 mM Sodium Chloride, 0.02% Sodium Azide and 50% Glycerol State: Purified State: Liquid purified Ig fraction
Concentration:	lot specific
Purification:	Immunoaffinity Chromatography
Conjugation:	Unconjugated
Storage:	Store the antibody (in aliquots) at -20°C. Avoid freeze-thaw cycles.
Stability:	Shelf life: one year from despatch.
Gene Name:	fibroblast growth factor receptor 2
Database Link:	Entrez Gene 17227 Mouse Entrez Gene 2263 Human P21802



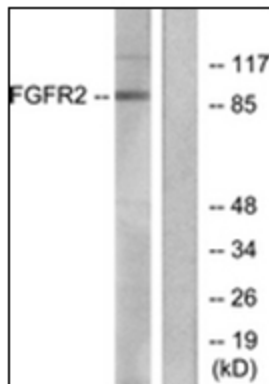
[View online »](#)

Background:

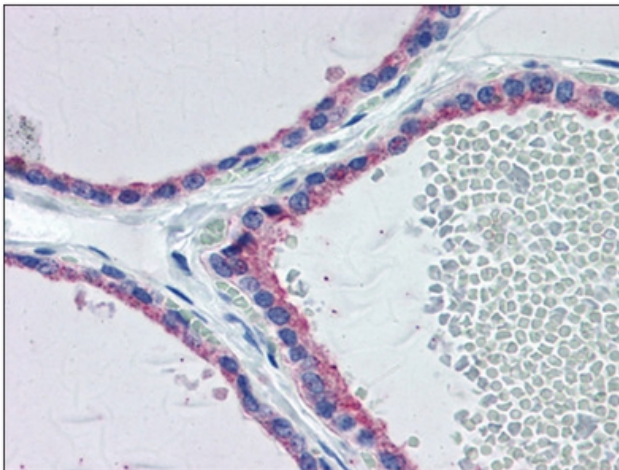
The fibroblast growth factor receptor 2 belongs to the FGF Receptor subfamily. The full-length protein consists of an extracellular region, composed of three immunoglobulin-like domains, a single hydrophobic membrane-spanning segment and a cytoplasmic tyrosine kinase domain. Ligand binding results in the activation of a cascade of downstream signals, ultimately influencing mitogenesis and differentiation. Various isoforms of FGFR2 have been identified that differ in structure and specificity. Defects in FGFR2 cause craniofacial abnormalities in diseases such as Crouzon Syndrome, Jackson-Weiss Syndrome, Apert Syndrome, and Pfeiffer Syndrome.

Synonyms:

FGFR2, BEK, KGFR, KSAM

Product images:

Western blot analysis of extracts from A549 cells, using FGFR2 Antibody. The lane on the right is treated with the synthesized peptide.



Human Thyroid: Formalin-Fixed, Paraffin-Embedded (FFPE)