

## Product datasheet for **AP31605PU-N**

### IL12A Goat Polyclonal Antibody

#### Product data:

Product Type:	Primary Antibodies
Applications:	ELISA, IHC
Recommended Dilution:	<b>ELISA:</b> 1/16000. <b>Immunohistochemistry on Paraffin Sections:</b> 3.75 µg/ml.
Reactivity:	Canine, Human, Porcine, Monkey
Host:	Goat
Clonality:	Polyclonal
Immunogen:	Synthetic peptide from human IL12A / p35
Specificity:	Recognizes Interleukin-12 alpha / IL12A.
Formulation:	Tris saline, pH 7.3 containing 0.02% Sodium Azide as preservative and 0.5% BSA as stabilizer State: Aff - Purified State: Liquid purified Ig fraction
Concentration:	lot specific
Purification:	Immunoaffinity Chromatography
Conjugation:	Unconjugated
Storage:	Store the antibody undiluted at 2-8°C for one month or (in aliquots) at -20°C for longer. Avoid freeze-thaw cycles.
Stability:	Shelf life: one year from despatch.
Gene Name:	interleukin 12A
Database Link:	<a href="#">Entrez Gene 3592 Human P29459</a>
Background:	Interleukin 12 (IL12) can act as a growth factor for activated T and NK cells, enhance the lytic activity of NK/lymphokine activated killer cells, and stimulate the production of IFN gamma by resting PBMC. IL12 induces IFN gamma, TNF alpha production in T and NK cells; costimulation of PBL proliferation; proliferation/differentiation of TH1 T lymphocytes. It is downregulated by IL10; homodimeric p40 antagonistic to functional p70 heterodimer. IL12R beta 1 binds p40 but when dimeric with IL12R beta 2 binds p35.
Synonyms:	IL-12A, IL-12 subunit p35, NKSF1, CLMF p35

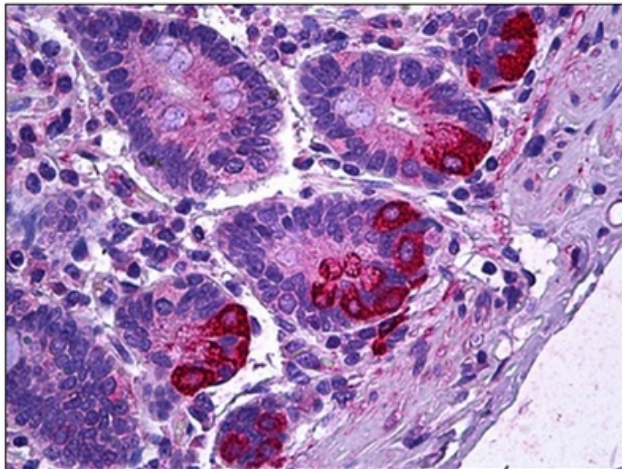


[View online »](#)

**Protein Families:** Druggable Genome, Secreted Protein

**Protein Pathways:** Allograft rejection, Cytokine-cytokine receptor interaction, Jak-STAT signaling pathway, RIG-I-like receptor signaling pathway, Toll-like receptor signaling pathway, Type I diabetes mellitus

**Product images:**



Human Intestine, Paneth Cells: Formalin-Fixed, Paraffin-Embedded (FFPE).