

Product datasheet for **AP31572PU-N**

GAD67 (GAD1) (+GAD25) Goat Polyclonal Antibody

Product data:

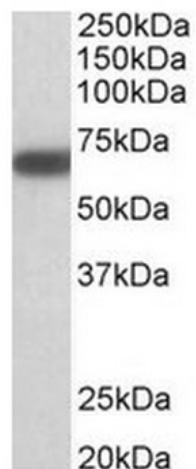
Product Type:	Primary Antibodies
Applications:	ELISA, WB
Recommended Dilution:	Peptide ELISA: 1/8000. Western blot: Approx 70kDa band observed in Mouse Brain lysates (calculated MW of 66.6kDa according to Mouse NP_032103.2). <u>Recommended concentration:</u> 1 - 3µg/ml.
Reactivity:	Bovine, Canine, Human, Mouse, Porcine, Rat
Host:	Goat
Clonality:	Polyclonal
Immunogen:	Peptide with sequence C-QRTNSLEEKSR, from the internal region of the protein sequence according to NP_038473.2; NP_000808.2.
Specificity:	This antibody is expected to recognize both reported isoforms of GAD25 (NP_038473.2; NP_000808.2).
Formulation:	Tris saline, pH7.3 containing 0.02% sodium azide as preservative and 0.5% bovine serum albumin as stabilizer State: Aff - Purified State: Liquid purified Ig fraction
Concentration:	lot specific
Purification:	Affinity chromatography
Conjugation:	Unconjugated
Storage:	Store the antibody at -20°C. Avoid repeated freezing and thawing.
Stability:	Shelf life: one year from despatch.
Gene Name:	glutamate decarboxylase 1
Database Link:	<u>Entrez Gene 14415 Mouse</u> <u>Entrez Gene 24379 Rat</u> <u>Entrez Gene 2571 Human</u> <u>Q99259</u>
Synonyms:	Glutamate decarboxylase 1, GAD-67
Protein Families:	Druggable Genome



[View online »](#)

Protein Pathways: Alanine, aspartate and glutamate metabolism, beta-Alanine metabolism, Butanoate metabolism, Metabolic pathways, Taurine and hypotaurine metabolism, Type I diabetes mellitus

Product images:



This antibody (1ug/ml) staining of Mouse Brain lysate (35ug protein in RIPA buffer). Primary incubation was 1 hour. Detected by chemiluminescence.