

Product datasheet for **AP31560PU-N**

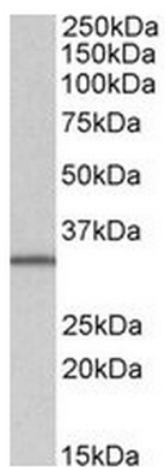
SLC9A3R2 (Isoform b) Goat Polyclonal Antibody

Product data:

Product Type:	Primary Antibodies
Applications:	ELISA, WB
Recommended Dilution:	Peptide ELISA: 1/32000. Western blot: Approx 35kDa band observed in lysates of cell lines HEK293 and Daudi (calculated MW of 36.2kDa according to NP_004776.3). <u>Recommended concentration:</u> 1 - 3 µg/ml.
Reactivity:	Human
Host:	Goat
Clonality:	Polyclonal
Immunogen:	Peptide with sequence C-DLPGSDKTEESGLH, from the internal region of the protein sequence according to NP_004776.3.
Specificity:	This antibody reacts to NHERF2.
Formulation:	Tris saline, pH7.3 containing 0.02% sodium azide as preservative and 0.5% bovine serum albumin as stabilizer State: Aff - Purified State: Liquid purified Ig fraction
Concentration:	lot specific
Purification:	Affinity chromatography
Conjugation:	Unconjugated
Storage:	Store the antibody at -20°C. Avoid repeated freezing and thawing.
Stability:	Shelf life: one year from despatch.
Gene Name:	SLC9A3 regulator 2
Database Link:	<u>Entrez Gene 9351 Human Q15599</u>
Synonyms:	NHERF-2, Tyrosine kinase activator protein 1, TKA-1, SRY-interacting protein 1, SIP-1



[View online »](#)

Product images:

Antibody (1ug/ml) staining of Daudi lysate (35ug protein in RIPA buffer). Primary incubation was 1 hour. Detected by chemiluminescence.