

Product datasheet for **AP31557PU-N**

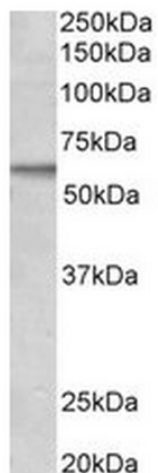
ACVRL1 (C-term) Goat Polyclonal Antibody

Product data:

Product Type:	Primary Antibodies
Applications:	ELISA, WB
Recommended Dilution:	Peptide ELISA: 1/32000. Western blot: Approx 60kDa band observed in lysates of cell line MCF7 (calculated MW of 56.1kDa according to NP_000011.2). <u>Recommended concentration:</u> 1 - 3 µg/ml.
Reactivity:	Human
Host:	Goat
Clonality:	Polyclonal
Immunogen:	Peptide with sequence C-KISNSPEKPKVIQ, from the C Terminus of the protein sequence according to NP_000011.2; NP_001070869.1.
Specificity:	This antibody reacts to Activin receptor-like kinase 1.
Formulation:	Tris saline, pH7.3 containing 0.02% sodium azide as preservative and 0.5% bovine serum albumin as stabilizer State: Aff - Purified State: Liquid purified Ig fraction
Concentration:	lot specific
Purification:	Affinity chromatography
Conjugation:	Unconjugated
Storage:	Store the antibody at -20°C. Avoid repeated freezing and thawing.
Stability:	Shelf life: one year from despatch.
Gene Name:	activin A receptor like type 1
Database Link:	<u>Entrez Gene 94 Human P37023</u>
Synonyms:	ACVRLK1, Activin receptor-like kinase 1, SKR3
Protein Families:	Druggable Genome, Protein Kinase, Transmembrane
Protein Pathways:	Cytokine-cytokine receptor interaction, TGF-beta signaling pathway



[View online »](#)

Product images:

Antibody (2ug/ml) staining of MCF7 lysate (35ug protein in RIPA buffer). Primary incubation was 1 hour. Detected by chemiluminescence.