

## Product datasheet for **AP31555PU-N**

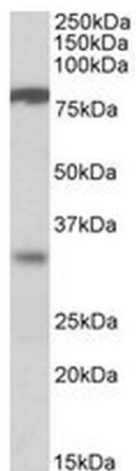
### CLCA1 Goat Polyclonal Antibody

#### Product data:

Product Type:	Primary Antibodies
Applications:	ELISA, WB
Recommended Dilution:	<b>Peptide ELISA:</b> 1/16000. <b>Western blot:</b> Experiments gave bands at approx 80kDa and 30kDa in Human Duodenum lysates. These bands correspond to earlier findings in literature with different antibodies (Gruber et al, Genomics. 1998 Dec 1;54(2):200-14.). This protein has a calculated MW of 100kDa according to NP_001276.1. <u>Recommended concentration:</u> 1 - 3 µg/ml.
Reactivity:	Human
Host:	Goat
Clonality:	Polyclonal
Immunogen:	Peptide with sequence C-TVTSKTNKDTSK, from the internal region of the protein sequence according to NP_001276.1.
Specificity:	This antibody reacts to CLCA1.
Formulation:	Tris saline, pH7.3 containing 0.02% sodium azide as preservative and 0.5% bovine serum albumin as stabilizer State: Aff - Purified State: Liquid purified Ig fraction
Concentration:	lot specific
Purification:	Affinity chromatography
Conjugation:	Unconjugated
Storage:	Store the antibody at -20°C. Avoid repeated freezing and thawing.
Stability:	Shelf life: one year from despatch.
Gene Name:	chloride channel accessory 1
Database Link:	<u><a href="#">Entrez Gene 1179 Human A8K7I4</a></u>
Synonyms:	CACC1, CaCC-1



[View online »](#)

**Product images:**

Antibody (1ug/ml) staining of Human Duodenum lysate (35ug protein in RIPA buffer). Primary incubation was 1 hour. Detected by chemiluminescence.