

## Product datasheet for **AP31433PU-N**

### Pancreatic Polypeptide (PPY) (61-73) Goat Polyclonal Antibody

#### Product data:

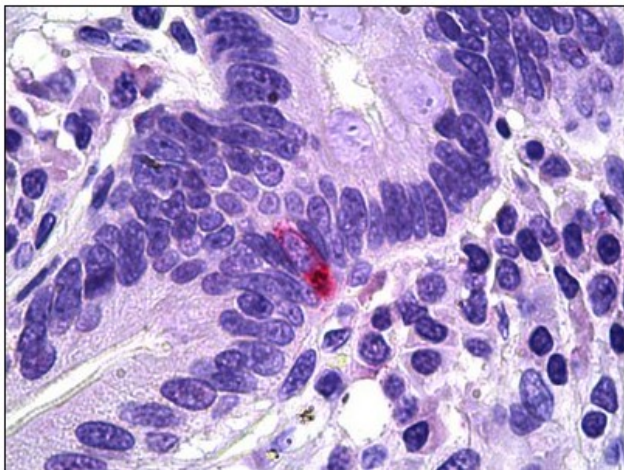
Product Type:	Primary Antibodies
Applications:	ELISA, IHC
Recommended Dilution:	<b>ELISA:</b> 1/32000. <b>Immunohistochemistry on Paraffin Sections:</b> 5 µg/ml.
Reactivity:	Canine, Human, Mouse, Rat, Monkey
Host:	Goat
Clonality:	Polyclonal
Immunogen:	Synthetic peptide from the internal region of of Human PPY (NP_002713.1)
Specificity:	This antibody detects the internal region of PPY.
Formulation:	Tris saline buffer, pH~7.3 containing 0.5% BSA as stabilizer and 0.02% Sodium Azide as preservative State: Aff - Purified State: Liquid purified Ig fraction
Concentration:	lot specific
Purification:	Immunoaffinity Chromatography
Conjugation:	Unconjugated
Storage:	Store the antibody undiluted at 2-8°C for one month or (in aliquots) at -20°C for longer. Avoid repeated freezing and thawing.
Stability:	Shelf life: one year from despatch.
Gene Name:	pancreatic polypeptide
Database Link:	<a href="#">Entrez Gene 19064 Mouse</a> <a href="#">Entrez Gene 24677 Rat</a> <a href="#">Entrez Gene 5539 Human P01298</a>
Background:	PPY / Pancreatic Polypeptide belongs to the NPY family and it encodes a protein that is synthesized as a 95 aa polypeptide precursor in the pancreatic islets of Langerhans. It is cleaved into two peptide products; the active hormone of 36 aa and an icosapeptide of unknown function. The hormone acts as a regulator of pancreatic and gastrointestinal functions and may be important in the regulation of food intake.
Synonyms:	Pancreatic polypeptide, PPY, PNP, Obinepitide



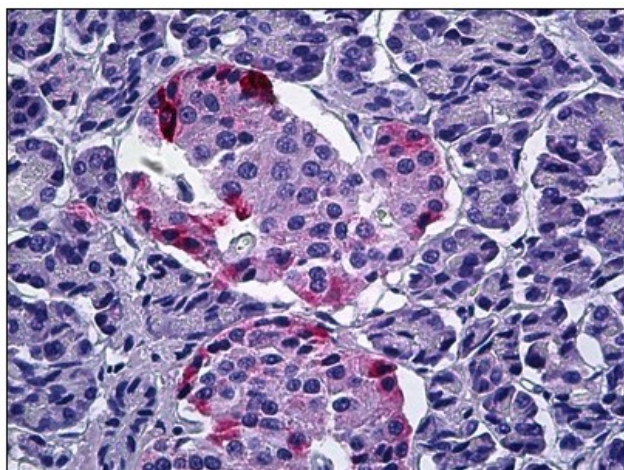
[View online »](#)

Protein Families: Secreted Protein

### Product images:



Human Intestine, Neuroendocrine Cells:  
Formalin-Fixed, Paraffin-Embedded (FFPE)



Human Pancreas: Formalin-Fixed, Paraffin-Embedded (FFPE)