

Product datasheet for **AP31428PU-N**

NKCC1 (SLC12A2) (769-783) Goat Polyclonal Antibody

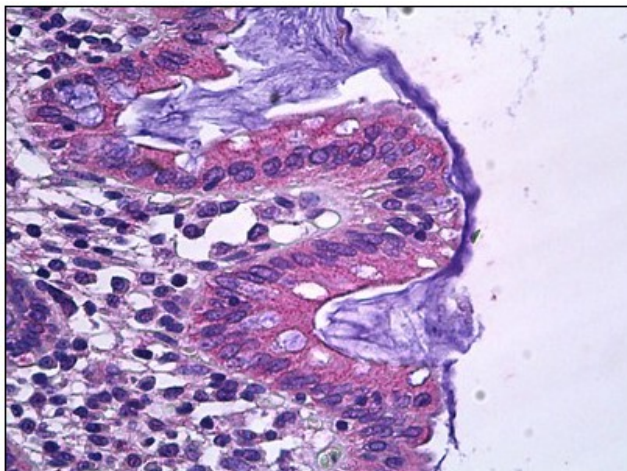
Product data:

Product Type:	Primary Antibodies
Applications:	ELISA, IHC
Recommended Dilution:	ELISA: 1/64000. Immunohistochemistry on Paraffin Sections: 3.75 µg/ml.
Reactivity:	Bovine, Canine, Human, Mouse, Rat, Chicken, Equine, Porcine
Host:	Goat
Clonality:	Polyclonal
Immunogen:	Synthetic peptide from an internal region of human SLC12A2 / NKCC1 (NP_001037.1)
Specificity:	This antibody reacts to the internal region of SLC12A2 / NKCC1.
Formulation:	Tris saline buffer, pH 7.3 containing 0.5% BSA as stabilizer and 0.02% sodium azide as preservative State: Aff - Purified State: Liquid purified Ig fraction
Concentration:	lot specific
Purification:	Immunoaffinity chromatography
Conjugation:	Unconjugated
Storage:	Store the antibody undiluted at 2-8°C for one month or (in aliquots) at -20°C for longer. Avoid repeated freezing and thawing.
Stability:	Shelf life: one year from despatch.
Gene Name:	solute carrier family 12 member 2
Database Link:	Entrez Gene 20496 Mouse Entrez Gene 83629 Rat Entrez Gene 6558 Human P55011
Background:	Electrically silent transporter system. Mediates sodium and chloride reabsorption. Plays a vital role in the regulation of ionic balance and cell volume.
Synonyms:	BSC; BSC2; MGC104233; NKCC1
Protein Families:	Druggable Genome, Transmembrane
Protein Pathways:	Vibrio cholerae infection



[View online »](#)

Product images:



Human Colon, Epithelium: Formalin-Fixed,
Paraffin-Embedded (FFPE)