

Product datasheet for **AP31426PU-N**

Caspase 2 (CASP2) Rabbit Polyclonal Antibody

Product data:

Product Type:	Primary Antibodies
Applications:	IHC, WB
Recommended Dilution:	Immunohistochemistry on Paraffin Sections: 1/200. Western Blot: 1/2000.
Reactivity:	Human
Host:	Rabbit
Isotype:	IgG
Clonality:	Polyclonal
Immunogen:	Synthetic peptide - KLH conjugated
Specificity:	This antibody reacts to Caspase 2 (CASP2).
Formulation:	HEPES with 0.15M NaCl, 0.01% BSA, 0.03% sodium azide, and 50% glycerol State: Purified State: Liquid purified Ig fraction
Conjugation:	Unconjugated
Storage:	Store the antibody undiluted at 2-8°C for one month or (in aliquots) at -20°C for longer. Avoid repeated freezing and thawing.
Stability:	Shelf life: one year from despatch.
Gene Name:	caspase 2
Database Link:	Entrez Gene 835 Human P42575
Background:	Caspases are a family of cysteine proteases that can be divided into the apoptotic and inflammatory caspase subfamilies. Unlike the apoptotic caspases, members of the inflammatory subfamily are generally not involved in cell death but are associated with the immune response to microbial pathogens. Members of this subfamily include caspase-1, -4, -5, and -12 and can activate proinflammatory cytokines such as IL-1b and IL-18. Although phylogenetically similar to this subfamily, Caspase-2 is thought to be involved in stress-induced apoptosis. Caspase-2 has two major isoforms; overexpression on the long form results in apoptosis while that of the short form suppresses cell death.

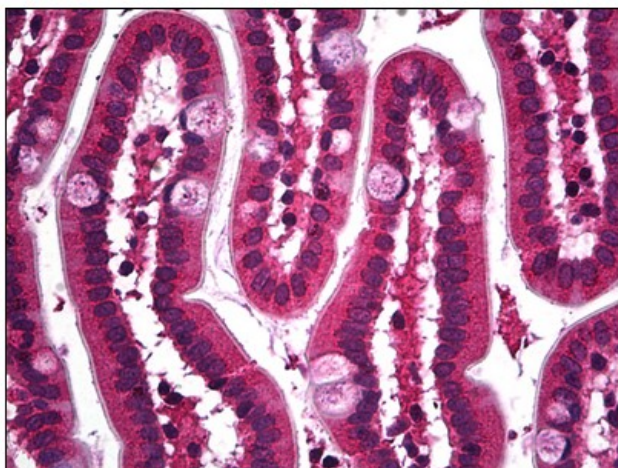


[View online »](#)

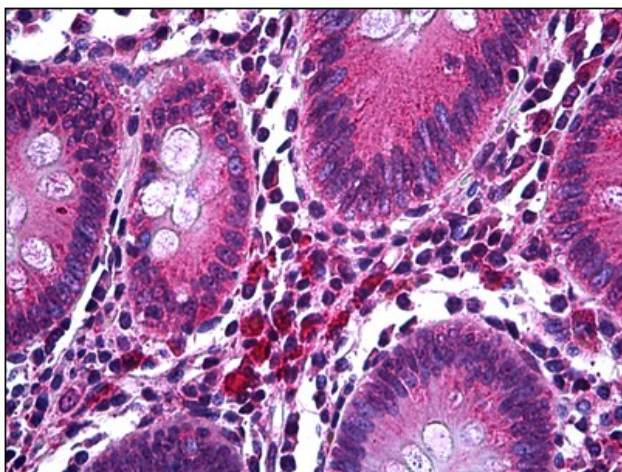
Synonyms: CASP-2, CASP2, ICH1, ICH-1 protease, NEDD2

Protein Families: Druggable Genome, Protease

Product images:



Human Small Intestine: Formalin-Fixed, Paraffin-Embedded (FFPE)



Human Colon: Formalin-Fixed, Paraffin-Embedded (FFPE)