

## Product datasheet for **AP31424PU-N**

### SOD2 Rabbit Polyclonal Antibody

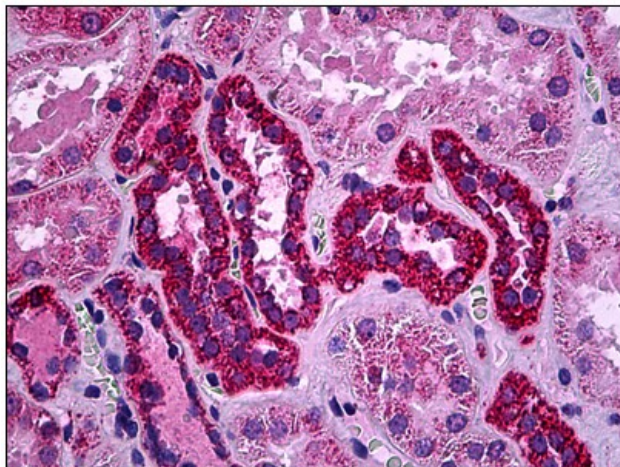
#### Product data:

Product Type:	Primary Antibodies
Applications:	IHC, IP, WB
Recommended Dilution:	<b>Immunohistochemistry on Paraffin Sections:</b> 1/200. <b>Immunoprecipitation.</b> <b>Western Blot:</b> 1/2000.
Reactivity:	Human, Mouse, Rat
Host:	Rabbit
Isotype:	IgG
Clonality:	Polyclonal
Immunogen:	Recombinant human protein purified from E. coli
Specificity:	This antibody reacts to SOD2.
Formulation:	HEPES with 0.15M NaCl, 0.01% BSA, 0.03% sodium azide, and 50% glycerol State: Purified State: Liquid purified Ig fraction
Conjugation:	Unconjugated
Storage:	Store the antibody undiluted at 2-8°C for one month or (in aliquots) at -20°C for longer. Avoid repeated freezing and thawing.
Stability:	Shelf life: one year from despatch.
Gene Name:	superoxide dismutase 2, mitochondrial
Database Link:	<a href="#">Entrez Gene 20656 Mouse</a> <a href="#">Entrez Gene 24787 Rat</a> <a href="#">Entrez Gene 6648 Human P04179</a>
Synonyms:	Superoxide dismutase Mn
Protein Families:	Druggable Genome, Transcription Factors
Protein Pathways:	Huntington's disease



[View online »](#)

**Product images:**



Human Kidney: Formalin-Fixed, Paraffin-Embedded (FFPE)