

Product datasheet for **AP31423PU-N**

Peroxiredoxin 6 (PRDX6) Rabbit Polyclonal Antibody

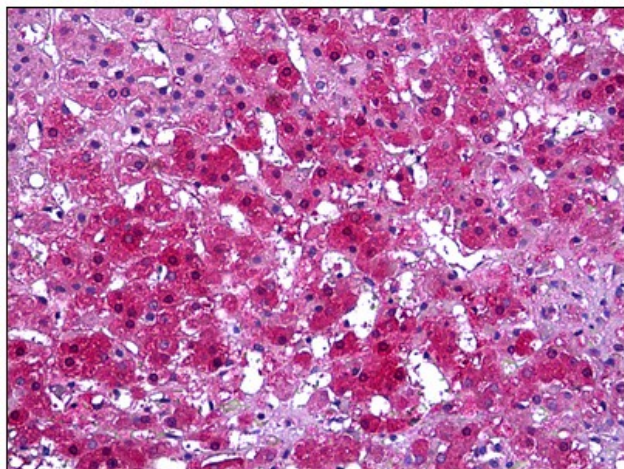
Product data:

Product Type:	Primary Antibodies
Applications:	IHC, WB
Recommended Dilution:	Immunohistochemistry on Paraffin Sections: 1/200. Western Blot: 1/2000.
Reactivity:	Human
Host:	Rabbit
Isotype:	IgG
Clonality:	Polyclonal
Immunogen:	Sulfonylated peptide (KLH coupled) corresponding to the active site sequence common to mammalian Prx VI
Specificity:	This antibody reacts to Peroxiredoxin 6 (PRDX6).
Formulation:	HEPES with 0.15M NaCl, 0.01% BSA, 0.03% sodium azide, and 50% glycerol State: Purified State: Liquid purified Ig fraction
Conjugation:	Unconjugated
Storage:	Store the antibody undiluted at 2-8°C for one month or (in aliquots) at -20°C for longer. Avoid repeated freezing and thawing.
Stability:	Shelf life: one year from despatch.
Gene Name:	peroxiredoxin 6
Database Link:	Entrez Gene 9588 Human P30041
Synonyms:	PRDX-6, Prx6, Prx-6, 1-Cys PRX, aiPLA2, NSGPx, AOP2, AOP-2, KIAA0106
Protein Families:	Druggable Genome
Protein Pathways:	Metabolic pathways, Methane metabolism, Phenylalanine metabolism

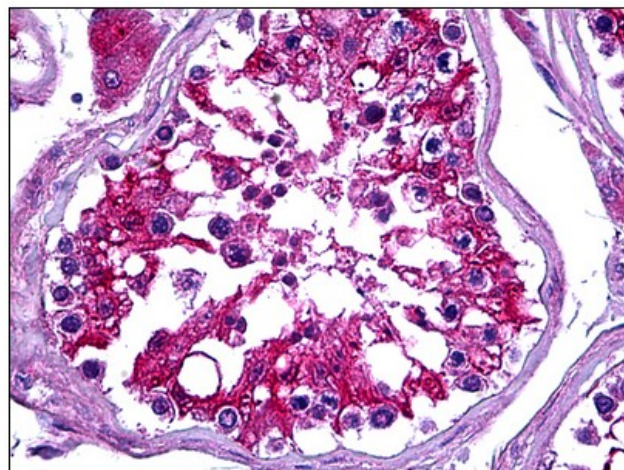


[View online »](#)

Product images:



Human Adrenal: Formalin-Fixed, Paraffin-Embedded (FFPE)



Human Testis: Formalin-Fixed, Paraffin-Embedded (FFPE)