

## Product datasheet for **AP31409PU-N**

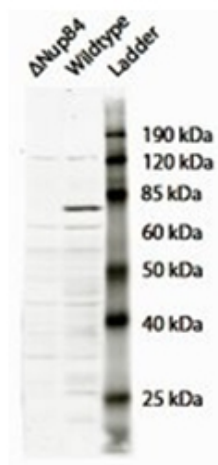
### **NUP84 (N-term) Goat Polyclonal Antibody**

#### **Product data:**

<b>Product Type:</b>	Primary Antibodies
<b>Applications:</b>	ELISA, WB
<b>Recommended Dilution:</b>	<b>Peptide ELISA:</b> Detection Limit: 1/8000. <b>Western Blot:</b> 2-4 µg/ml. Approx 75kDa band observed in <i>S. cerevisiae</i> wildtype lysates but not in the knock-out strain (calculated MW of 83.6kDa according to NP_010167.1).
<b>Reactivity:</b>	<i>Saccharomyces cerevisiae</i>
<b>Host:</b>	Goat
<b>Clonality:</b>	Polyclonal
<b>Immunogen:</b>	Peptide with sequence from the N Terminus of the protein sequence according to NP_010167.1.
<b>Specificity:</b>	Recognizes NUP84 (yeast)
<b>Formulation:</b>	Tris saline, pH~7.3 containing 0.02% Sodium Azide as preservative and 0.5% BSA as stabilizer State: Aff - Purified State: Liquid purified Ig fraction
<b>Concentration:</b>	lot specific
<b>Purification:</b>	Ammonium Sulphate Precipitation followed by Antigen Affinity Chromatography using the immunizing peptide
<b>Conjugation:</b>	Unconjugated
<b>Storage:</b>	Store the antibody undiluted at 2-8°C for one month or (in aliquots) at -20°C for longer. Avoid repeated freezing and thawing.
<b>Stability:</b>	Shelf life: one year from despatch.
<b>Database Link:</b>	<a href="#">P52891</a>



[View online »](#)

**Product images:**

NUP84 antibody staining of *Saccharomyces cerevisiae* S288c lysate at 2  $\mu$ g/ml (35  $\mu$ g protein in RIPA buffer). Primary incubation was 1 hour. Detected by chemiluminescence. Data kindly provided by Dr. F Reggiori, University of Utrecht, Netherlands.