

## Product datasheet for **AP31403PU-N**

### Alk Goat Polyclonal Antibody

#### Product data:

Product Type:	Primary Antibodies
Applications:	ELISA, WB
Recommended Dilution:	<b>Peptide ELISA:</b> Detection Limit: 1/32000. <b>Western Blot:</b> 0.03-0.1 µg/ml. Approx 150kDa band observed in Rat Brain lysates (calculated MW of 175kDa according to Rat NP_001162572.1).
Reactivity:	Mouse, Rat
Host:	Goat
Clonality:	Polyclonal
Immunogen:	Peptide with sequence from the internal region of the protein sequence according to NP_031465.2.
Specificity:	This antibody recognizes CD246/ALK
Formulation:	Tris saline, pH~7.3 containing 0.02% Sodium Azide as preservative and 0.5% BSA as stabilizer State: Aff - Purified State: Liquid purified Ig fraction
Concentration:	lot specific
Purification:	Ammonium Sulphate Precipitation followed by Antigen Affinity Chromatography using the immunizing peptide
Conjugation:	Unconjugated
Storage:	Store the antibody undiluted at 2-8°C for one month or (in aliquots) at -20°C for longer. Avoid repeated freezing and thawing.
Stability:	Shelf life: one year from despatch.
Gene Name:	anaplastic lymphoma kinase
Database Link:	<a href="#">Entrez Gene 11682 Mouse P97793</a>



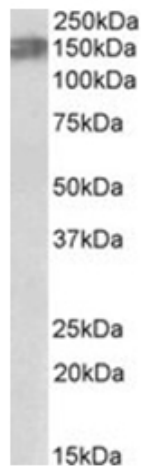
[View online »](#)

**Background:**

LTK, ALK and Ros have been identified as receptor tyrosine kinases having sequence similarity to the insulin receptor subfamily of kinases. LTK, leukocyte tyrosine kinase, is expressed in murine B-lymphocyte precursors and has also been found in forebrain neurons. ALK, anaplastic lymphoma kinase, is normally highly expressed specifically in the nervous system. A truncated form containing the catalytic domain of ALK is expressed as the result of a translocation occurring in many non-Hodgkin's lymphomas. The c-Ros gene was originally identified in mutant form as an oncogene. Ros is normally expressed in a small number of epithelial cell types and may play a role in epithelial development.

**Synonyms:**

ALK tyrosine kinase receptor

**Product images:**

Alk antibody staining of Rat Brain lysate at 0.03 ug/ml (35 ug protein in RIPA buffer). Primary incubation was 1 hour. Detected by chemiluminescence.