

Product datasheet for **AP31373FC-N**

Lactoferrin (LTF) Rabbit Polyclonal Antibody

Product data:

Product Type:	Primary Antibodies
Applications:	FC, IF, IHC
Recommended Dilution:	Flow Cytometry. Immunocytochemistry. Immunofluorescence: 1/50 - 1/200. Immunohistochemistry on Paraffin Sections: 5 µg/ml.
Reactivity:	Human
Host:	Rabbit
Isotype:	IgG
Clonality:	Polyclonal
Immunogen:	Purified Lactoferrin from Human colostrum.
Specificity:	Recognizes Human milk Lactoferrin. Does not cross-react with other milk or serum proteins. This antibody May cross-react with lactoferrin from other species.
Formulation:	Sodium Phosphate, pH 7.2 containing 1 mg/ml BSA as stabilizer and 0.05% Sodium Azide as preservative. Label: FITC State: Liquid purified IgG fraction. Label: Fluorescein
Concentration:	lot specific
Purification:	Immunoaffinity Chromatography.
Conjugation:	FITC
Storage:	Store the antibody undiluted at 2-8°C for one month or (40-50% Add Glycerol) at -20°C for longer. Avoid repeated freezing and thawing.
Stability:	Shelf life: one year from despatch.
Gene Name:	lactotransferrin



[View online »](#)

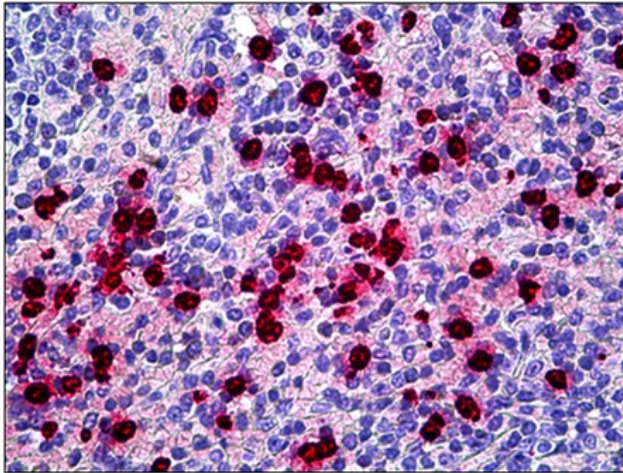
Database Link: [Entrez Gene 4057 Human P02788](#)

Background: Lactoferrin is an 80kDa non-haem, iron-binding globular glycoprotein and member of the transferrin family present in milk and mucosal secretions, and also released from neutrophil granules during inflammation. LTF acts as a major first line defense against microbial infections, partly due to its ability to efficiently bind to and hence remove Fe³⁺ from the environment, but studies have also shown that LTF possesses bactericidal properties and proteolytic activity, capable of cleaving arginine-rich sequences within microbial proteins. Three isoforms of LTF have been identified: LTF-alpha, LTF-beta and LTF-gamma and receptors for LTF are expressed in the gastrointestinal tract, by macrophages, lymphocytes, neutrophils and platelets and also by some bacteria.

Synonyms: LTF, LF, Lactoferrin, EC=3.4.21, Talalactoferrin

Protein Families: Druggable Genome, Protease, Secreted Protein

Product images:



Human Spleen, Neutrophils: Formalin-Fixed, Paraffin-Embedded (FFPE).