

Product datasheet for **AP31370PU-N**

EIF3D Rabbit Polyclonal Antibody

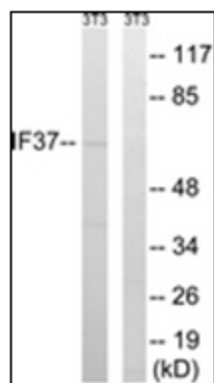
Product data:

Product Type:	Primary Antibodies
Applications:	ELISA, IHC, WB
Recommended Dilution:	ELISA: 1/40000. Immunohistochemistry on Paraffin Sections: 1/100. Western Blot: 1/500 - 1/1000.
Reactivity:	Human, Mouse
Host:	Rabbit
Isotype:	IgG
Clonality:	Polyclonal
Immunogen:	Synthetic peptide - KLH conjugated
Specificity:	This antibody detects endogenous levels of total EIF3D protein.
Formulation:	PBS (without Mg ²⁺ , Ca ²⁺), pH 7.4 containing 150 mM Sodium Chloride, 0.02% Sodium Azide and 50% Glycerol. State: Purified State: Liquid purified IgG fraction.
Concentration:	lot specific
Purification:	Immunoaffinity Chromatography.
Conjugation:	Unconjugated
Storage:	Store the antibody undiluted at 2-8°C for one month or (in aliquots) at -20°C for longer. Avoid repeated freezing and thawing.
Stability:	Shelf life: one year from despatch.
Gene Name:	eukaryotic translation initiation factor 3 subunit D
Database Link:	Entrez Gene 55944 Mouse Entrez Gene 8664 Human O15371
Synonyms:	Eukaryotic translation initiation factor 3 subunit D, eIF-3-zeta, eIF3 p66

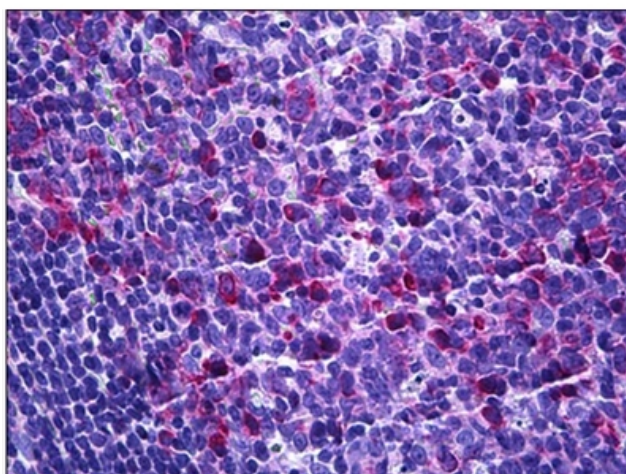


[View online »](#)

Product images:



Western blot analysis of extracts from NIH-3T3 cells, using EIF3D Antibody. The lane on the right is treated with the synthesized peptide.



Human Tonsil: Formalin-Fixed, Paraffin-Embedded (FFPE)