

Product datasheet for **AP31369PU-N**

NCF1 (C-term) Rabbit Polyclonal Antibody

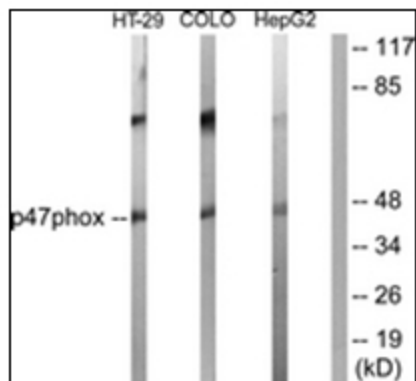
Product data:

Product Type:	Primary Antibodies
Applications:	ELISA, IHC, WB
Recommended Dilution:	ELISA: 1/5000. Immunohistochemistry on Paraffin Sections: 1/200. Western Blot: 1/500 - 1/1000.
Reactivity:	Human, Mouse, Rat
Host:	Rabbit
Isotype:	IgG
Clonality:	Polyclonal
Immunogen:	Synthetic peptide - KLH conjugated
Specificity:	This antibody detects endogenous levels of total p47 phox protein.
Formulation:	PBS (without Mg ²⁺ , Ca ²⁺), pH 7.4 containing 150 mM Sodium Chloride, 0.02% Sodium Azide and 50% Glycerol. State: Purified State: Liquid purified IgG fraction.
Concentration:	lot specific
Purification:	Immunoaffinity Chromatography.
Conjugation:	Unconjugated
Storage:	Store the antibody undiluted at 2-8°C for one month or (in aliquots) at -20°C for longer. Avoid repeated freezing and thawing.
Stability:	Shelf life: one year from despatch.
Gene Name:	neutrophil cytosolic factor 1
Database Link:	Entrez Gene 17969 Mouse Entrez Gene 114553 Rat Entrez Gene 653361 Human P14598
Synonyms:	NCF-1, Neutrophil cytosol factor 1, NOXO2, Nox organizer 2, SH3PXD1A
Protein Pathways:	Chemokine signaling pathway, Fc gamma R-mediated phagocytosis, Leukocyte transendothelial migration, Pathogenic Escherichia coli infection, Regulation of actin cytoskeleton

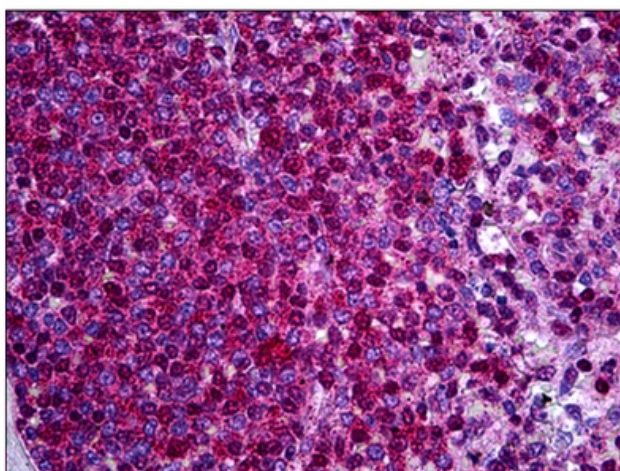


[View online »](#)

Product images:



Western blot analysis of extracts from HT-29/COLO205/HepG2 cells, using p47 phox Antibody. The lane on the right is treated with the synthesized peptide.



Human Spleen: Formalin-Fixed, Paraffin-Embedded (FFPE)